

# JADE1 Rabbit Polyclonal Antibody



CAB12579

---

## Product Information

### Size:

20uL, 50uL, 100uL, 200uL

### Observed MW:

### Calculated MW:

58kDa/94kDa/95kDa

### Applications:

IHC IF

### Reactivity:

Human, Mouse

## Antibody Information

### Recommended dilutions:

IHC 1:50 - 1:100 IF 1:50 - 1:100

### Source:

Rabbit

### Isotype:

IgG

### Purification:

Affinity purification

## Protein Background

### Immunogen information

#### Gene ID:

79960

#### Uniprot

Q6IE81

#### Synonyms:

JADE1; PHF17

#### Immunogen:

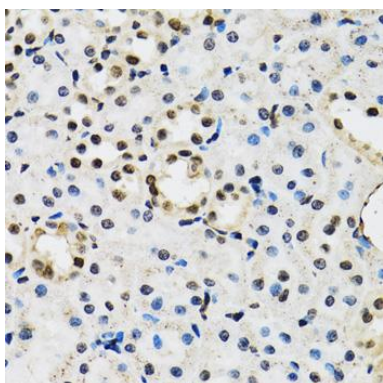
Recombinant fusion protein containing a sequence corresponding to amino acids 210-509 of human JADE1 (NP\_079176.2).

#### Storage:

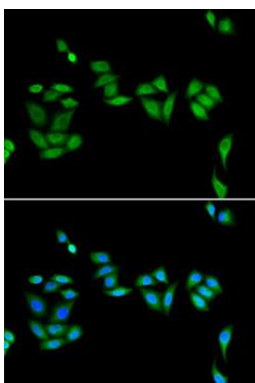
Store at -20°C. Avoid freeze / thaw cycles. Buffer: PBS with 0.02% sodium azide, 50% glycerol, pH7.3.

## Product Images

---



Immunohistochemistry of paraffin-embedded mouse kidney using JADE1 antibody (CAB12579) at dilution of 1:100 (40x lens).



Immunofluorescence analysis of U2OS cells using JADE1 antibody (CAB12579). Blue: DAPI for nuclear staining.