

METTL13 Rabbit Polyclonal Antibody



CAB12582

Product Information

Size:

20uL, 50uL, 100uL, 200uL

Observed MW:

85kDa

Calculated MW:

44kDa/61kDa/68kDa/72kDa/
78kDa

Applications:

WB IHC IF

Reactivity:

Human

Antibody Information

Recommended dilutions:

WB 1:500 - 1:2000 IHC 1:50
- 1:100 IF 1:50 - 1:100

Source:

Rabbit

Isotype:

IgG

Purification:

Affinity purification

Protein Background

Immunogen information

Gene ID:

51603

Uniprot

Q8N6R0

Synonyms:

METTL13; 5630401D24Rik; CGI-01; KIAA0859; feat

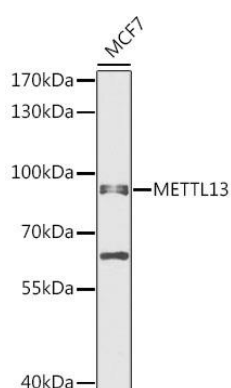
Immunogen:

Recombinant fusion protein containing a sequence corresponding to amino acids 430-699 of human METTL13 (NP_057019.3).

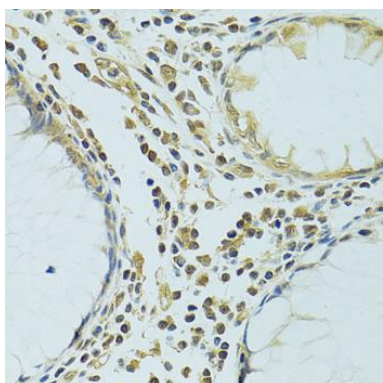
Storage:

Store at -20°C. Avoid freeze / thaw cycles. Buffer: PBS with 0.02% sodium azide, 50% glycerol, pH7.3.

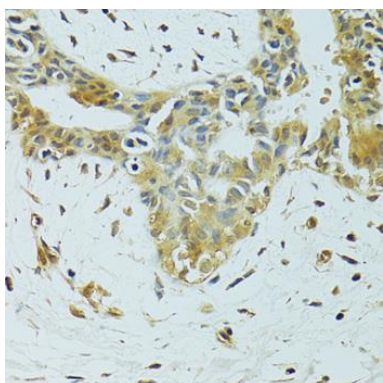
Product Images



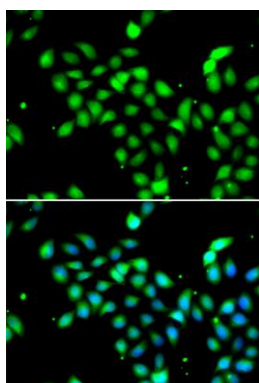
Western blot analysis of extracts of MCF7 cells, using METTL13 antibody (CAB12582) at 1:1000 dilution. Secondary antibody: HRP Goat Anti-Rabbit IgG (H+L) (CABS014) at 1:10000 dilution. Lysates/proteins: 25ug per lane. Blocking buffer: 3% nonfat dry milk in TBST. Detection: ECL Enhanced Kit (CABM00021). Exposure time: 30s.



Immunohistochemistry of paraffin-embedded human colon using METTL13 antibody (CAB12582) at dilution of 1:100 (40x lens).



Immunohistochemistry of paraffin-embedded human breast cancer using METTL13 antibody (CAB12582) at dilution of 1:100 (40x lens).



Immunofluorescence analysis of A549 cells using METTL13 antibody (CAB12582). Blue: DAPI for nuclear staining.