

PRPF19 Rabbit Polyclonal Antibody



CAB12590

Product Information

Size:

20uL, 50uL, 100uL, 200uL

Observed MW:

55kDa

Calculated MW:

55kDa

Applications:

WB IHC IP

Reactivity:

Human, Mouse, Rat

Antibody Information

Recommended dilutions:

WB 1:500 - 1:2000 IHC 1:50
- 1:200 IP 1:50 - 1:100

Source:

Rabbit

Isotype:

IgG

Purification:

Affinity purification

Protein Background

Immunogen information

Gene ID:

27339

Uniprot

Q9UMS4

Synonyms:

PRPF19; NMP200; PRP19; PSO4; SNEV; UBOX4; hPSO4

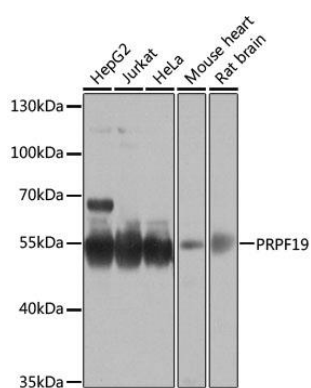
Immunogen:

Recombinant fusion protein containing a sequence corresponding to amino acids 127-416 of human PRPF19 (NP_055317.1).

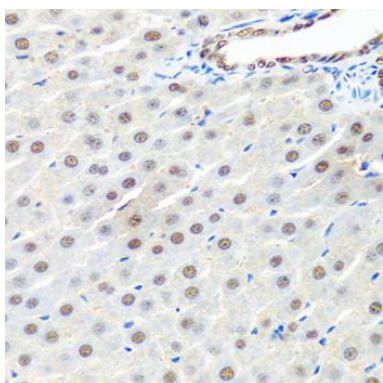
Storage:

Store at -20°C. Avoid freeze / thaw cycles. Buffer: PBS with 0.02% sodium azide, 50% glycerol, pH7.3.

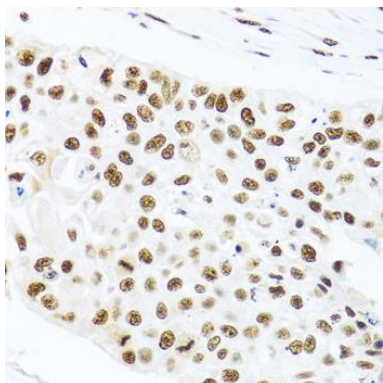
Product Images



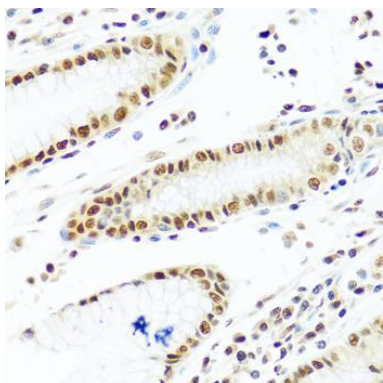
Western blot analysis of extracts of various cell lines, using PRPF19 antibody (CAB12590) at 1:1000 dilution. Secondary antibody: HRP Goat Anti-Rabbit IgG (H+L) (CABS014) at 1:10000 dilution. Lysates/proteins: 25ug per lane. Blocking buffer: 3% nonfat dry milk in TBST. Detection: ECL Basic Kit (CABM00020). Exposure time: 30s.



Immunohistochemistry of paraffin-embedded rat liver using PRPF19 antibody (CAB12590) at dilution of 1:100 (40x lens).



Immunohistochemistry of paraffin-embedded human lung cancer using PRPF19 antibody (CAB12590) at dilution of 1:100 (40x lens).



Immunohistochemistry of paraffin-embedded human stomach using PRPF19 antibody (CAB12590) at dilution of 1:100 (40x lens).