

CDCA8 Rabbit Polyclonal Antibody



CAB12594

Product Information

Size:

20uL, 50uL, 100uL, 200uL

Observed MW:

36-38kDa

Calculated MW:

31kDa

Applications:

WB IHC

Reactivity:

Human, Mouse, Rat

Protein Background

This gene encodes a component of the chromosomal passenger complex. This complex is an essential regulator of mitosis and cell division. This protein is cell-cycle regulated and is required for chromatin-induced microtubule stabilization and spindle formation. Alternate splicing results in multiple transcript variants. Pseudogenes of this gene are found on chromosomes 7, 8 and 16.

Immunogen information

Gene ID:

55143

Uniprot

Q53HL2

Synonyms:

CDCA8; BOR; BOREALIN; DasraB; MESRGP; borealin

Antibody Information

Recommended dilutions:

WB 1:500 - 1:1000 IHC 1:50
- 1:100

Source:

Rabbit

Isotype:

IgG

Purification:

Affinity purification

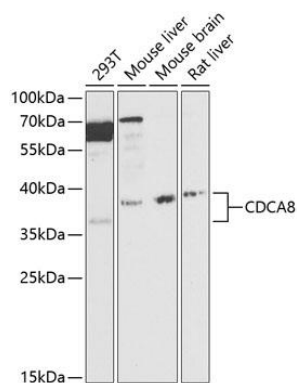
Immunogen:

Recombinant fusion protein containing a sequence corresponding to amino acids 1-280 of human CDCA8 (NP_060571.1).

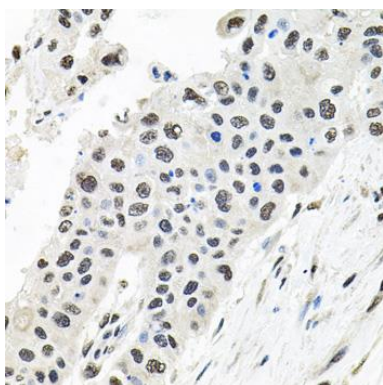
Storage:

Store at -20°C. Avoid freeze / thaw cycles. Buffer: PBS with 0.02% sodium azide, 50% glycerol, pH7.3.

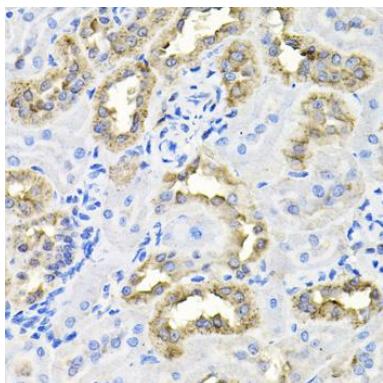
Product Images



Western blot analysis of extracts of various cell lines, using CDCA8 antibody (CAB12594) at 1:1000 dilution. Secondary antibody: HRP Goat Anti-Rabbit IgG (H+L) (CABS014) at 1:10000 dilution. Lysates/proteins: 25ug per lane. Blocking buffer: 3% nonfat dry milk in TBST. Detection: ECL Basic Kit (CABM00020). Exposure time: 60s.



Immunohistochemistry of paraffin-embedded human lung cancer using CDCA8 antibody (CAB12594) at dilution of 1:100 (40x lens).



Immunohistochemistry of paraffin-embedded rat kidney using CDCA8 antibody (CAB12594) at dilution of 1:100 (40x lens).