

# MKL1 Rabbit Polyclonal Antibody



CAB12598

## Product Information

### Size:

20uL, 50uL, 100uL, 200uL

### Observed MW:

145kDa

### Calculated MW:

98kDa

### Applications:

WB IHC IP

### Reactivity:

Human, Mouse, Rat

## Protein Background

The protein encoded by this gene interacts with the transcription factor myocardin, a key regulator of smooth muscle cell differentiation. The encoded protein is predominantly nuclear and may help transduce signals from the cytoskeleton to the nucleus. This gene is involved in a specific translocation event that creates a fusion of this gene and the RNA-binding motif protein-15 gene. This translocation has been associated with acute megakaryocytic leukemia. Alternative splicing results in multiple transcript variants.

## Immunogen information

### Gene ID:

57591

### Uniprot

Q969V6

### Synonyms:

MKL1; BSAC; MAL; MRTF-A

## Antibody Information

### Recommended dilutions:

WB 1:500 - 1:2000 IHC 1:50  
- 1:200 IP 1:50 - 1:200

### Source:

Rabbit

### Isotype:

IgG

### Purification:

Affinity purification

### Immunogen:

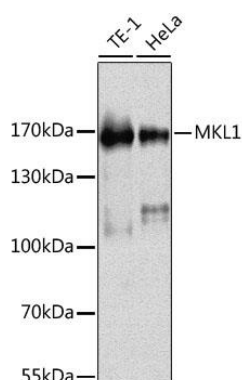
Recombinant fusion protein containing a sequence corresponding to amino acids 1-280 of human MKL1 (NP\_065882.1).

### Storage:

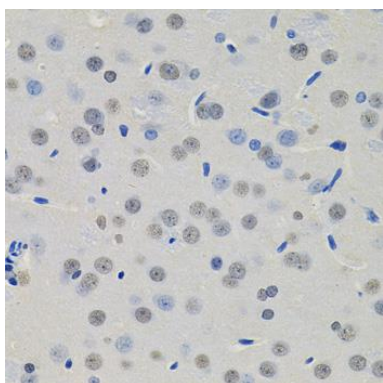
Store at -20°C. Avoid freeze / thaw cycles. Buffer: PBS with 0.02% sodium azide, 50% glycerol, pH7.3.

## Product Images

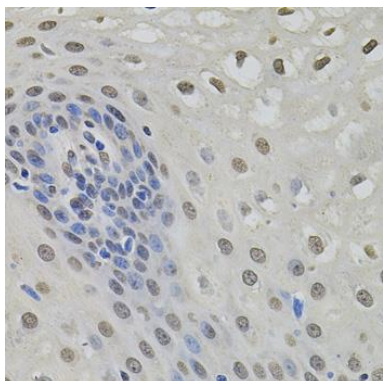
---



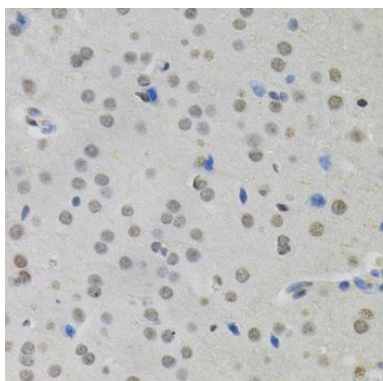
Western blot analysis of extracts of various cell lines, using MKL1 antibody (CAB12598) at 1:1000 dilution. Secondary antibody: HRP Goat Anti-Rabbit IgG (H+L) (CABS014) at 1:10000 dilution. Lysates/proteins: 25ug per lane. Blocking buffer: 3% nonfat dry milk in TBST. Detection: ECL Basic Kit (CABM00020). Exposure time: 5s.



Immunohistochemistry of paraffin-embedded rat brain using MKL1 antibody (CAB12598) (40x lens).



Immunohistochemistry of paraffin-embedded human esophagus using MKL1 antibody (CAB12598) (40x lens).



Immunohistochemistry of paraffin-embedded mouse brain using MKL1 antibody (CAB12598) (40x lens).