

# TRPV3 Rabbit Polyclonal Antibody



CAB12613

## Product Information

### Size:

20uL, 50uL, 100uL, 200uL

### Observed MW:

Refer to figures

### Calculated MW:

87kDa/90kDa

### Applications:

WB IHC

### Reactivity:

Human, Mouse, Rat

## Antibody Information

### Recommended dilutions:

WB 1:500 - 1:2000 IHC 1:50  
- 1:200

### Source:

Rabbit

### Isotype:

IgG

### Purification:

Affinity purification

## Protein Background

This gene product belongs to a family of nonselective cation channels that function in a variety of processes, including temperature sensation and vasoregulation. The thermosensitive members of this family are expressed in subsets of sensory neurons that terminate in the skin, and are activated at distinct physiological temperatures. This channel is activated at temperatures between 22 and 40 degrees C. This gene lies in close proximity to another family member gene on chromosome 17, and the two encoded proteins are thought to associate with each other to form heteromeric channels. Multiple transcript variants encoding different isoforms have been found for this gene.

## Immunogen information

### Gene ID:

162514

### Uniprot

Q8NET8

### Synonyms:

TRPV3; FNEPPK2; OLMS; VRL3

### Immunogen:

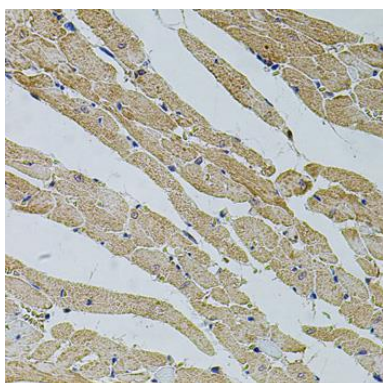
A synthetic peptide corresponding to a sequence within amino acids 400-500 of human TRPV3 (NP\_659505.1).

### Storage:

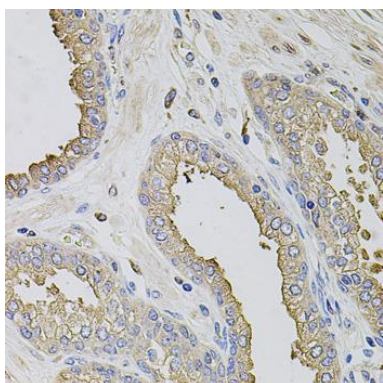
Store at -20°C. Avoid freeze / thaw cycles. Buffer: PBS with 0.02% sodium azide, 50% glycerol, pH7.3.

## Product Images

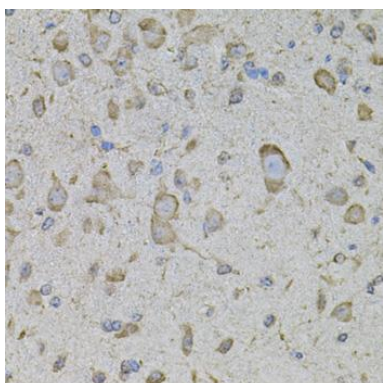
---



Immunohistochemistry of paraffin-embedded rat heart using TRPV3 antibody (CAB12613) at dilution of 1:100 (40x lens).



Immunohistochemistry of paraffin-embedded human prostate using TRPV3 antibody (CAB12613) at dilution of 1:100 (40x lens).



Immunohistochemistry of paraffin-embedded mouse brain using TRPV3 antibody (CAB12613) at dilution of 1:100 (40x lens).