

TUBB8 Rabbit Polyclonal Antibody



CAB12617

Product Information

Size:

20uL, 50uL, 100uL, 200uL

Observed MW:

54kDa

Calculated MW:

49kDa

Applications:

WB IHC IF

Reactivity:

Human, Mouse, Rat

Protein Background

The protein encoded by this gene represents the primary beta-tubulin subunit of oocytes and the early embryo. Defects in this gene, which is primate-specific, are a cause of oocyte maturation defect 2 and infertility.

Immunogen information

Gene ID:

347688

Uniprot

Q3ZCM7

Synonyms:

TUBB8; OOMD; OOMD2; bA631M21.2

Antibody Information

Recommended dilutions:

WB 1:500 - 1:2000 IHC 1:50
- 1:200 IF 1:50 - 1:200

Source:

Rabbit

Isotype:

IgG

Purification:

Affinity purification

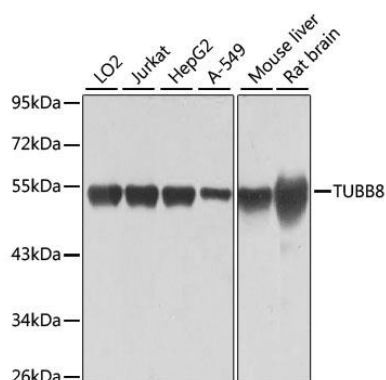
Immunogen:

A synthetic peptide of human TUBB8

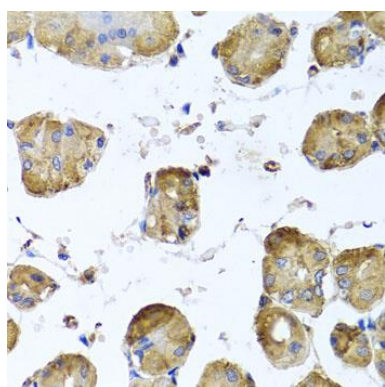
Storage:

Store at -20°C. Avoid freeze / thaw cycles. Buffer: PBS with 0.02% sodium azide, 50% glycerol, pH7.3.

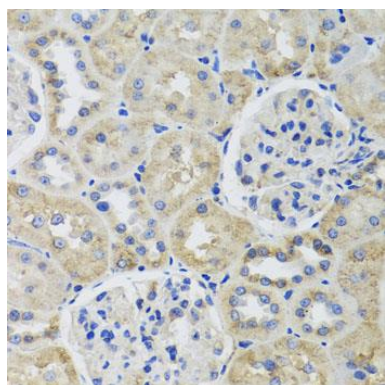
Product Images



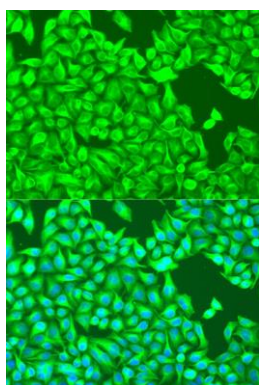
Western blot analysis of extracts of various cell lines, using TUBB8 antibody (CAB12617) at 1:1000 dilution. Secondary antibody: HRP Goat Anti-Rabbit IgG (H+L) (CABS014) at 1:10000 dilution. Lysates/proteins: 25ug per lane. Blocking buffer: 3% nonfat dry milk in TBST. Detection: ECL Basic Kit (CABM00020). Exposure time: 1s.



Immunohistochemistry of paraffin-embedded human stomach using TUBB8 antibody (CAB12617) at dilution of 1:100 (40x lens).



Immunohistochemistry of paraffin-embedded rat kidney using TUBB8 antibody (CAB12617) at dilution of 1:100 (40x lens).



Immunofluorescence analysis of U2OS cells using TUBB8 antibody (CAB12617) at dilution of 1:100. Blue: DAPI for nuclear staining.