

# Gm13125 Rabbit Polyclonal Antibody



CAB12619

---

## Product Information

### Size:

20uL, 50uL, 100uL, 200uL

### Observed MW:

55kDa

### Calculated MW:

55kDa

### Applications:

WB IHC

### Reactivity:

Human, Mouse, Rat

## Antibody Information

### Recommended dilutions:

WB 1:500 - 1:2000 IHC 1:50  
- 1:200

### Source:

Rabbit

### Isotype:

IgG

### Purification:

Affinity purification

## Protein Background

### Immunogen information

#### Gene ID:

627009

#### Uniprot

Q5VT98

#### Synonyms:

PRAMEF20; PRAMEF21; Gm13125

#### Immunogen:

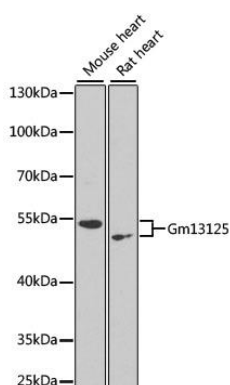
Recombinant fusion protein containing a sequence corresponding to amino acids 1-477 of mouse Gm13125 (NP\_001108549.1).

#### Storage:

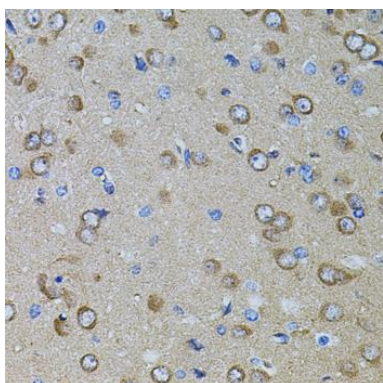
Store at -20°C. Avoid freeze / thaw cycles. Buffer: PBS with 0.02% sodium azide, 50% glycerol, pH7.3.

## Product Images

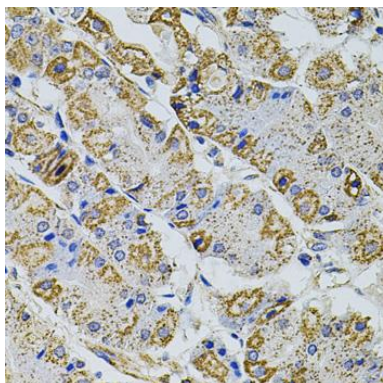
---



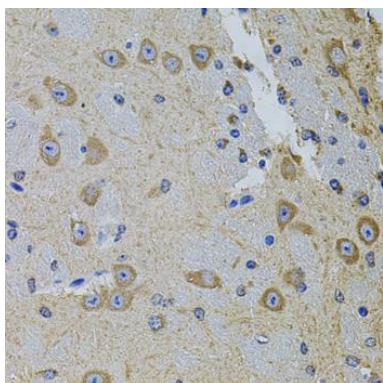
Western blot analysis of extracts of various cell lines, using Gm13125 antibody (CAB12619) at 1:1000 dilution. Secondary antibody: HRP Goat Anti-Rabbit IgG (H+L) (CABS014) at 1:10000 dilution. Lysates/proteins: 25ug per lane. Blocking buffer: 3% nonfat dry milk in TBST. Detection: ECL Enhanced Kit (CABM00021). Exposure time: 90s.



Immunohistochemistry of paraffin-embedded rat brain using GM13125 antibody (CAB12619) at dilution of 1:100 (40x lens).



Immunohistochemistry of paraffin-embedded human stomach using GM13125 antibody (CAB12619) at dilution of 1:100 (40x lens).



Immunohistochemistry of paraffin-embedded mouse brain using GM13125 antibody (CAB12619) at dilution of 1:100 (40x lens).