

# COG2 Rabbit Polyclonal Antibody



CAB12626

## Product Information

### Size:

20uL, 50uL, 100uL, 200uL

### Observed MW:

### Calculated MW:

83kDa

### Applications:

IF

### Reactivity:

Human

## Protein Background

This gene encodes a subunit of the conserved oligomeric Golgi complex that is required for maintaining normal structure and activity of the Golgi complex. The encoded protein specifically interacts with the USO1 vesicle docking protein and may be necessary for normal Golgi ribbon formation and trafficking of Golgi enzymes. Mutations of this gene are associated with abnormal glycosylation within the Golgi apparatus. Alternative splicing results in multiple transcript variants.

## Immunogen information

### Gene ID:

22796

### Uniprot

Q14746

### Synonyms:

COG2; LDLC; CDG2Q

## Antibody Information

### Recommended dilutions:

IF 1:20 - 1:100

### Source:

Rabbit

### Isotype:

IgG

### Purification:

Affinity purification

### Immunogen:

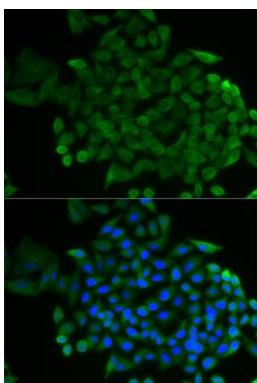
Recombinant fusion protein containing a sequence corresponding to amino acids 1-280 of human COG2 (NP\_031383.1).

### Storage:

Store at -20°C. Avoid freeze / thaw cycles. Buffer: PBS with 0.02% sodium azide, 50% glycerol, pH7.3.

## Product Images

---



Immunofluorescence analysis of MCF-7 cells using COG2 antibody (CAB12626). Blue: DAPI for nuclear staining.