

EVC Rabbit Polyclonal Antibody



CAB12635

Product Information

Size:

20uL, 50uL, 100uL, 200uL

Observed MW:

112kDa

Calculated MW:

111kDa

Applications:

WB

Reactivity:

Mouse

Protein Background

This gene encodes a protein containing a leucine zipper and a transmembrane domain. This gene has been implicated in both Ellis-van Creveld syndrome (EvC) and Weyers acrorenal dysostosis.

Immunogen information

Gene ID:

2121

Uniprot

P57679

Synonyms:

EVC; DWF-1; EVC1; EVCL

Antibody Information

Recommended dilutions:

WB 1:1000 - 1:3000

Source:

Rabbit

Isotype:

IgG

Purification:

Affinity purification

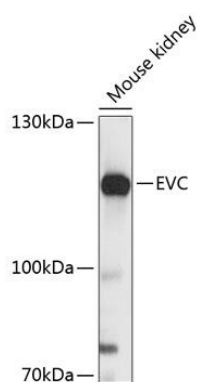
Immunogen:

Recombinant fusion protein containing a sequence corresponding to amino acids 743-992 of human EVC (NP_714928.1).

Storage:

Store at -20°C. Avoid freeze / thaw cycles. Buffer: PBS with 0.02% sodium azide, 50% glycerol, pH7.3.

Product Images



Western blot analysis of extracts of mouse kidney, using EVC antibody (CAB12635) at 1:3000 dilution. Secondary antibody: HRP Goat Anti-Rabbit IgG (H+L) (CABS014) at 1:10000 dilution. Lysates/proteins: 25ug per lane. Blocking buffer: 3% nonfat dry milk in TBST. Detection: ECL Basic Kit (CABM00020). Exposure time: 10s.