

# CXCL2 Rabbit Polyclonal Antibody



CAB12639

## Product Information

### Size:

20uL, 50uL, 100uL, 200uL

### Observed MW:

11kDa

### Calculated MW:

11kDa

### Applications:

WB

### Reactivity:

Rat

## Antibody Information

### Recommended dilutions:

WB 1:500 - 1:2000

### Source:

Rabbit

### Isotype:

IgG

### Purification:

Affinity purification

## Protein Background

This antimicrobial gene is part of a chemokine superfamily that encodes secreted proteins involved in immunoregulatory and inflammatory processes. The superfamily is divided into four subfamilies based on the arrangement of the N-terminal cysteine residues of the mature peptide. This chemokine, a member of the CXC subfamily, is expressed at sites of inflammation and may suppress hematopoietic progenitor cell proliferation.

## Immunogen information

### Gene ID:

2920

### Uniprot

P19875

### Synonyms:

CXCL2; CINC-2a; GRO2; GROb; MGSA-b; MIP-2a; MIP2; MIP2A; SCYB2

### Immunogen:

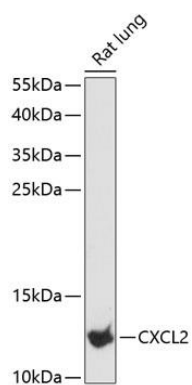
Recombinant fusion protein containing a sequence corresponding to amino acids 1-107 of human CXCL2 (NP\_002080.1).

### Storage:

Store at -20°C. Avoid freeze / thaw cycles. Buffer: PBS with 0.02% sodium azide, 50% glycerol, pH7.3.

## Product Images

---



Western blot analysis of extracts of rat lung, using CXCL2 antibody (CAB12639) at 1:3000 dilution. Secondary antibody: HRP Goat Anti-Rabbit IgG (H+L) (CABS014) at 1:10000 dilution. Lysates/proteins: 25ug per lane. Blocking buffer: 3% nonfat dry milk in TBST. Detection: ECL Basic Kit (CABM00020). Exposure time: 90s.