

HIBADH Rabbit Polyclonal Antibody



CAB1264

Product Information

Size:

20uL, 50uL, 100uL, 200uL

Observed MW:

35kDa

Calculated MW:

35kDa

Applications:

WB IHC IF

Reactivity:

Human, Mouse, Rat

Protein Background

This gene encodes a mitochondrial 3-hydroxyisobutyrate dehydrogenase enzyme. The encoded protein plays a critical role in the catabolism of L-valine by catalyzing the oxidation of 3-hydroxyisobutyrate to methylmalonate semialdehyde.

Immunogen information

Gene ID:

11112

Uniprot

P31937

Synonyms:

HIBADH; NS5ATP1

Antibody Information

Recommended dilutions:

WB 1:1000 - 1:3000 IHC
1:50 - 1:200 IF 1:50 - 1:200

Source:

Rabbit

Isotype:

IgG

Purification:

Affinity purification

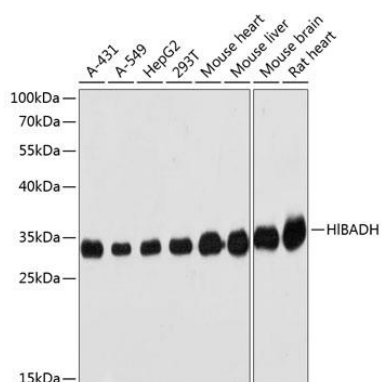
Immunogen:

Recombinant fusion protein containing a sequence corresponding to amino acids 37-336 of human HIBADH (NP_689953.1).

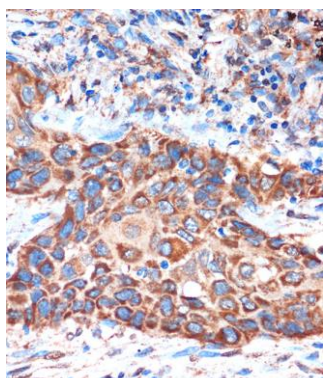
Storage:

Store at -20°C. Avoid freeze / thaw cycles. Buffer: PBS with 0.02% sodium azide, 50% glycerol, pH7.3.

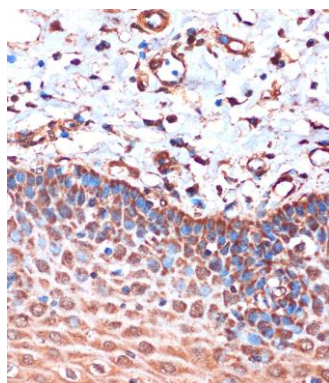
Product Images



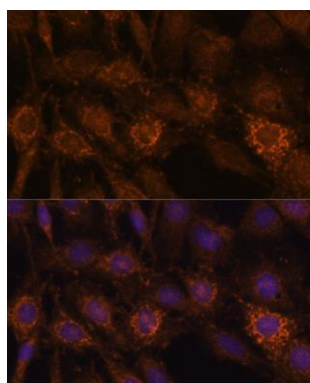
Western blot analysis of extracts of various cell lines, using HIBADH antibody (CAB1264) at 1:3000 dilution. Secondary antibody: HRP Goat Anti-Rabbit IgG (H+L) (CABS014) at 1:10000 dilution. Lysates/proteins: 25ug per lane. Blocking buffer: 3% nonfat dry milk in TBST. Detection: ECL Basic Kit (CABM00020). Exposure time: 20s.



Immunohistochemistry of paraffin-embedded Human lung cancer using HIBADH Rabbit pAb (CAB1264) at dilution of 1:100 (40x lens).



Immunohistochemistry of paraffin-embedded Human esophageal using HIBADH Rabbit pAb (CAB1264) at dilution of 1:100 (40x lens).



Immunofluorescence analysis of C6 cells using HIBADH antibody (CAB1264) at dilution of 1:100. Blue: DAPI for nuclear staining.