

# RAG1 Rabbit Polyclonal Antibody



CAB12646

---

## Product Information

### Size:

20uL, 50uL, 100uL, 200uL

### Observed MW:

110kDa

### Calculated MW:

106kDa/119kDa

### Applications:

WB

### Reactivity:

Mouse

## Protein Background

The protein encoded by this gene is involved in activation of immunoglobulin V-D-J recombination. The encoded protein is involved in recognition of the DNA substrate, but stable binding and cleavage activity also requires RAG2. Defects in this gene can be the cause of several diseases.

## Immunogen information

### Gene ID:

5896

### Uniprot

P15918

### Synonyms:

RAG1; RAG-1; RNF74

## Antibody Information

### Recommended dilutions:

WB 1:1000 - 1:3000

### Source:

Rabbit

### Isotype:

IgG

### Purification:

Affinity purification

### Immunogen:

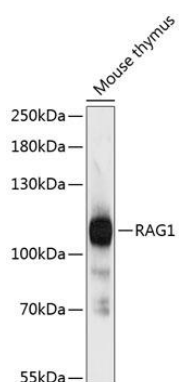
Recombinant fusion protein containing a sequence corresponding to amino acids 1-270 of human RAG1 (NP\_000439.1).

### Storage:

Store at -20°C. Avoid freeze / thaw cycles. Buffer: PBS with 0.02% sodium azide, 50% glycerol, pH7.3.

## Product Images

---



Western blot analysis of extracts of mouse thymus, using RAG1 antibody (CAB12646) at 1:3000 dilution. Secondary antibody: HRP Goat Anti-Rabbit IgG (H+L) (CABS014) at 1:10000 dilution. Lysates/proteins: 25ug per lane. Blocking buffer: 3% nonfat dry milk in TBST. Detection: ECL Basic Kit (CABM00020). Exposure time: 90s.