

# LGR4 Rabbit Polyclonal Antibody



CAB12657

---

## Product Information

### Size:

20uL, 50uL, 100uL, 200uL

### Observed MW:

104kDa

### Calculated MW:

101kDa/104kDa

### Applications:

WB IF

### Reactivity:

Human, Mouse, Rat

## Protein Background

The protein encoded by this gene is a G-protein coupled receptor that binds R-spondins and activates the Wnt signaling pathway. This Wnt signaling pathway activation is necessary for proper development of many organs of the body. [provided by RefSeq, Oct 2016]

## Immunogen information

### Gene ID:

55366

### Uniprot

Q9BXB1

### Synonyms:

LGR4; BNMD17; GPR48

## Antibody Information

### Recommended dilutions:

WB 1:1000 - 1:3000 IF 1:50  
- 1:200

### Source:

Rabbit

### Isotype:

IgG

### Purification:

Affinity purification

### Immunogen:

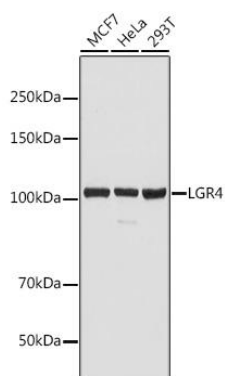
Recombinant fusion protein containing a sequence corresponding to amino acids 320-540 of human LGR4 (NP\_060960.2).

### Storage:

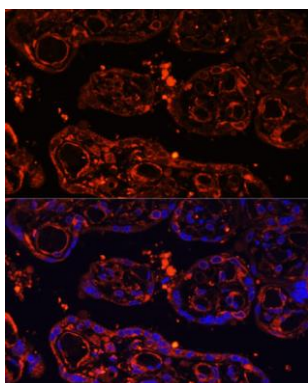
Store at -20°C. Avoid freeze / thaw cycles. Buffer: PBS with 0.02% sodium azide, 50% glycerol, pH7.3.

## Product Images

---



Western blot analysis of extracts of various cell lines, using LGR4 antibody (CAB12657) at 1:2000 dilution. Secondary antibody: HRP Goat Anti-Rabbit IgG (H+L) (CABS014) at 1:10000 dilution. Lysates/proteins: 25ug per lane. Blocking buffer: 3% nonfat dry milk in TBST. Detection: ECL Basic Kit (CABM00020). Exposure time: 1s.



Immunofluorescence analysis of human placenta using LGR4 Polyclonal Antibody (CAB12657) at dilution of 1:100 (40x lens). Blue: DAPI for nuclear staining.