

LGR4 Rabbit Polyclonal Antibody



CAB12658

Product Information

Size:

20uL, 50uL, 100uL, 200uL

Observed MW:

104kDa

Calculated MW:

101kDa/104kDa

Applications:

WB IF

Reactivity:

Human

Antibody Information

Recommended dilutions:

WB 1:500 - 1:2000 IF 1:50 - 1:200

Source:

Rabbit

Isotype:

IgG

Purification:

Affinity purification

Protein Background

Immunogen information

Gene ID:

55366

Uniprot

Q9BXB1

Synonyms:

LGR4; BNMD17; GPR48

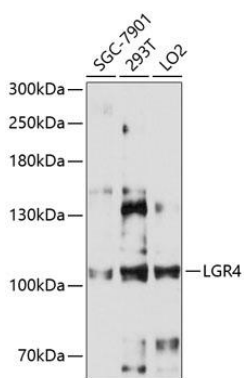
Immunogen:

Recombinant fusion protein containing a sequence corresponding to amino acids 320-540 of human LGR4 (NP_060960.2).

Storage:

Store at -20°C. Avoid freeze / thaw cycles. Buffer: PBS with 0.02% sodium azide, 50% glycerol, pH7.3.

Product Images



Western blot analysis of extracts of various cell lines, using LGR4 antibody (CAB12658) at 1:3000 dilution. Secondary antibody: HRP Goat Anti-Rabbit IgG (H+L) (CABS014) at 1:10000 dilution. Lysates/proteins: 25ug per lane. Blocking buffer: 3% nonfat dry milk in TBST. Detection: ECL Enhanced Kit (CABM00021). Exposure time: 120s.