

HEL308 Rabbit Polyclonal Antibody



CAB12661

Product Information

Size:

20uL, 50uL, 100uL, 200uL

Observed MW:

124kDa

Calculated MW:

15kDa/28kDa/35kDa/124kDa

Applications:

WB IHC

Reactivity:

Human, Mouse, Rat

Antibody Information

Recommended dilutions:

WB 1:1000 - 1:3000 IHC
1:50 - 1:200

Source:

Rabbit

Isotype:

IgG

Purification:

Affinity purification

Protein Background

Immunogen information

Gene ID:

113510

Uniprot

Q8TDG4

Synonyms:

HELQ; HEL308

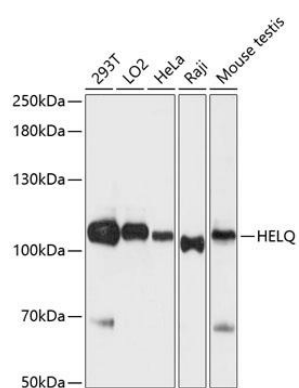
Immunogen:

Recombinant fusion protein containing a sequence corresponding to amino acids 1-270 of human HEL308 (NP_598375.2).

Storage:

Store at -20°C. Avoid freeze / thaw cycles. Buffer: PBS with 0.02% sodium azide, 50% glycerol, pH7.3.

Product Images



Western blot analysis of extracts of various cell lines, using HELQ antibody (CAB12661) at 1:3000 dilution. Secondary antibody: HRP Goat Anti-Rabbit IgG (H+L) (CABS014) at 1:10000 dilution. Lysates/proteins: 25ug per lane. Blocking buffer: 3% nonfat dry milk in TBST. Detection: ECL Basic Kit (CABM00020). Exposure time: 90s.