

# ZC3H12A Rabbit Polyclonal Antibody



CAB12667

---

## Product Information

### Size:

20uL, 50uL, 100uL, 200uL

### Observed MW:

66kDa

### Calculated MW:

65kDa

### Applications:

WB

### Reactivity:

Human

## Antibody Information

### Recommended dilutions:

WB 1:1000 - 1:3000

### Source:

Rabbit

### Isotype:

IgG

### Purification:

Affinity purification

## Protein Background

### Immunogen information

#### Gene ID:

80149

#### Uniprot

Q5D1E8

#### Synonyms:

ZC3H12A; MCPIP; MCPIP-1; MCPIP1; Reg1; dJ423B22.1

#### Immunogen:

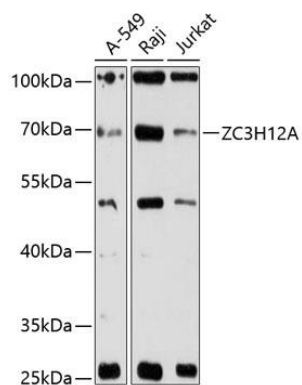
Recombinant fusion protein containing a sequence corresponding to amino acids 1-140 of human ZC3H12A (NP\_079355.2).

#### Storage:

Store at -20°C. Avoid freeze / thaw cycles. Buffer: PBS with 0.02% sodium azide, 50% glycerol, pH7.3.

## Product Images

---



Western blot analysis of extracts of various cell lines, using ZC3H12A antibody (CAB12667) at 1:3000 dilution. Secondary antibody: HRP Goat Anti-Rabbit IgG (H+L) (CABS014) at 1:10000 dilution. Lysates/proteins: 25ug per lane. Blocking buffer: 3% nonfat dry milk in TBST. Detection: ECL Basic Kit (CABM00020). Exposure time: 90s.