

SLC1A5 Rabbit Polyclonal Antibody



CAB12676

Product Information

Size:

20uL, 50uL, 100uL, 200uL

Observed MW:

57kDa

Calculated MW:

33kDa/36kDa/56kDa

Applications:

WB

Reactivity:

Rat

Antibody Information

Recommended dilutions:

WB 1:500 - 1:2000

Source:

Rabbit

Isotype:

IgG

Purification:

Affinity purification

Protein Background

Immunogen information

Gene ID:

6510

Uniprot

Q15758

Synonyms:

SLC1A5; AAAT; ASCT2; ATBO; M7V1; M7VS1; R16; RDRC

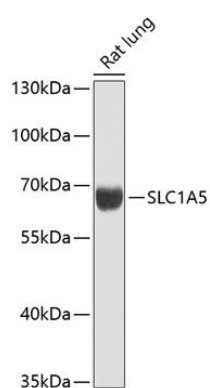
Immunogen:

Recombinant fusion protein containing a sequence corresponding to amino acids 1-100 of human SLC1A5 (NP_005619.1).

Storage:

Store at -20°C. Avoid freeze / thaw cycles. Buffer: PBS with 0.02% sodium azide, 50% glycerol, pH7.3.

Product Images



Western blot analysis of extracts of rat lung, using SLC1A5 antibody (CAB12676) at 1:1000 dilution. Secondary antibody: HRP Goat Anti-Rabbit IgG (H+L) (CABS014) at 1:10000 dilution. Lysates/proteins: 25ug per lane. Blocking buffer: 3% nonfat dry milk in TBST. Detection: ECL Basic Kit (CABM00020). Exposure time: 90s.