

# FKBP8 Rabbit Polyclonal Antibody



CAB1268

## Product Information

### Size:

50uL, 100uL

### Observed MW:

45kDa

### Calculated MW:

27kDa/44kDa

### Applications:

WB IF IP

### Reactivity:

Human, Mouse

## Protein Background

The protein encoded by this gene is a member of the immunophilin protein family, which play a role in immunoregulation and basic cellular processes involving protein folding and trafficking. Unlike the other members of the family, this encoded protein does not seem to have PPlase/rotamase activity. It may have a role in neurons associated with memory function.

## Immunogen information

### Gene ID:

23770

### Uniprot

Q14318

### Synonyms:

FKBP8; FKBP38; FKBP38

## Antibody Information

### Recommended dilutions:

WB 1:500 - 1:2000 IF 1:20 -  
1:100 IP 1:20 - 1:50

### Source:

Rabbit

### Isotype:

IgG

### Purification:

Affinity purification

### Immunogen:

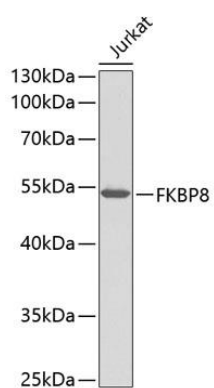
Recombinant protein of human FKBP8

### Storage:

Store at -20°C. Avoid freeze / thaw cycles. Buffer: PBS with 0.02% sodium azide, 50% glycerol, pH7.3.

## Product Images

---



Western blot analysis of extracts of Jurkat cells, using FKBP8 antibody (CAB1268). Secondary antibody: HRP Goat Anti-Rabbit IgG (H+L) (CABS014) at 1:10000 dilution. Lysates/proteins: 25ug per lane. Blocking buffer: 3% nonfat dry milk in TBST.