

HMGA1 Rabbit Polyclonal Antibody



CAB12693

Product Information

Size:

20uL, 50uL, 100uL, 200uL

Observed MW:

16kDa

Calculated MW:

10kDa/11kDa/19kDa

Applications:

WB IHC

Reactivity:

Mouse, Rat

Antibody Information

Recommended dilutions:

WB 1:1000 - 1:2000 IHC
1:50 - 1:200

Source:

Rabbit

Isotype:

IgG

Purification:

Affinity purification

Protein Background

This gene encodes a chromatin-associated protein involved in the regulation of gene transcription, integration of retroviruses into chromosomes, and the metastatic progression of cancer cells. The encoded protein preferentially binds to the minor groove of AT-rich regions in double-stranded DNA. Multiple transcript variants encoding different isoforms have been found for this gene. Pseudogenes of this gene have been identified on multiple chromosomes.

Immunogen information

Gene ID:

3159

Uniprot

P17096

Synonyms:

HMGA1; HMG-R; HMGA1A; HMG1Y

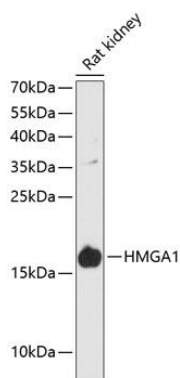
Immunogen:

A synthetic peptide corresponding to a sequence within amino acids 1-100 of human HMGA1 (NP_665908.1).

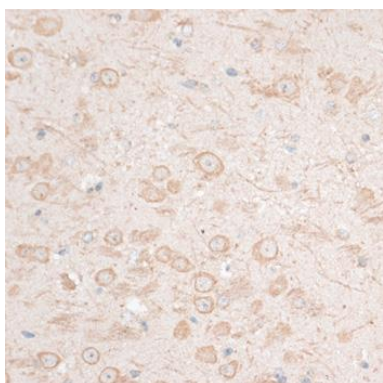
Storage:

Store at -20°C. Avoid freeze / thaw cycles. Buffer: PBS with 0.02% sodium azide, 50% glycerol, pH7.3.

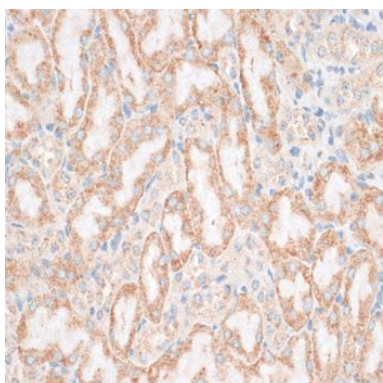
Product Images



Western blot analysis of extracts of rat kidney, using HMGA1 antibody (CAB12693) at 1:3000 dilution. Secondary antibody: HRP Goat Anti-Rabbit IgG (H+L) (CABS014) at 1:10000 dilution. Lysates/proteins: 25ug per lane. Blocking buffer: 3% nonfat dry milk in TBST. Detection: ECL Basic Kit (CABM00020). Exposure time: 90s.



Immunohistochemistry of paraffin-embedded mouse brain using HMGA1 antibody (CAB12693) at dilution of 1:100 (40x lens).



Immunohistochemistry of paraffin-embedded mouse kidney using HMGA1 antibody (CAB12693) at dilution of 1:100 (40x lens).