

# NLRP3 Rabbit Polyclonal Antibody



CAB12694

## Product Information

### Size:

20uL, 50uL, 100uL, 200uL

### Observed MW:

100kDa

### Calculated MW:

83kDa/105kDa/111kDa/112kDa/115kDa/118kDa

### Applications:

WB IHC IF

### Reactivity:

Human, Mouse, Rat

## Antibody Information

### Recommended dilutions:

WB 1:1000 - 1:3000 IHC  
1:50 - 1:200 IF 1:50 - 1:200

### Source:

Rabbit

### Isotype:

IgG

### Purification:

Affinity purification

## Protein Background

This gene encodes a pyrin-like protein containing a pyrin domain, a nucleotide-binding site (NBS) domain, and a leucine-rich repeat (LRR) motif. This protein interacts with the apoptosis-associated speck-like protein PYCARD/ASC, which contains a caspase recruitment domain, and is a member of the NALP3 inflammasome complex. This complex functions as an upstream activator of NF-kappaB signaling, and it plays a role in the regulation of inflammation, the immune response, and apoptosis. Mutations in this gene are associated with familial cold autoinflammatory syndrome (FCAS), Muckle-Wells syndrome (MWS), chronic infantile neurological cutaneous and articular (CINCA) syndrome, and neonatal-onset multisystem inflammatory disease (NOMID). Multiple alternatively spliced transcript variants encoding distinct isoforms have been identified for this gene. Alternative 5' UTR structures are suggested by available data; however, insufficient evidence is available to determine if all of the represented 5' UTR splice patterns are biologically valid.

## Immunogen information

### Gene ID:

114548

### Uniprot

Q96P20

### Synonyms:

NLRP3; AGTAVPRL; AII; AVP; C1orf7; CIAS1; CLR1.1; FCAS; FCAS1; FCU; MWS; NALP3; PYPAF1

### Immunogen:

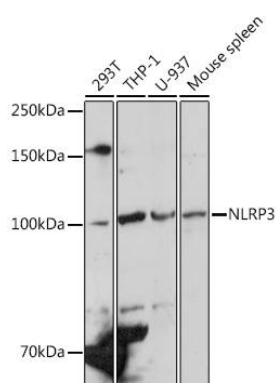
A synthetic peptide corresponding to a sequence within amino acids 900 to the C-terminus of human NLRP3 (NP\_001120934.1).

### Storage:

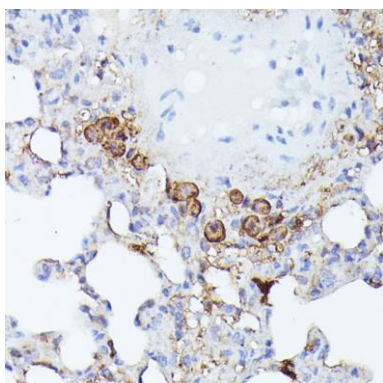
Store at -20°C. Avoid freeze / thaw cycles. Buffer: PBS with 0.02% sodium azide, 50% glycerol, pH7.3.

## Product Images

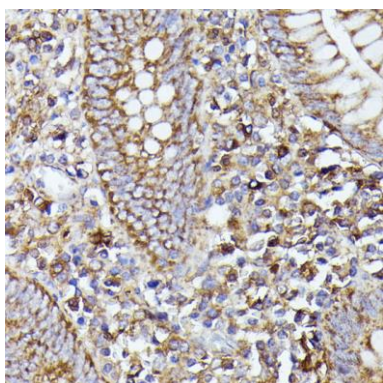
---



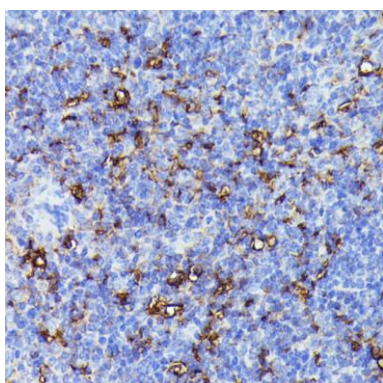
Western blot analysis of extracts of various cell lines, using NLRP3 Rabbit pAb (CAB12694) at 1:1000 dilution. Secondary antibody: HRP Goat Anti-Rabbit IgG (H+L) (CABS014) at 1:10000 dilution. Lysates/proteins: 25ug per lane. Blocking buffer: 3% nonfat dry milk in TBST. Detection: ECL Enhanced Kit (CABM00021). Exposure time: 180s.



Immunohistochemistry of paraffin-embedded rat lung using NLRP3 antibody (CAB12694) at dilution of 1:100 (40x lens).



Immunohistochemistry of paraffin-embedded human appendix using NLRP3 antibody (CAB12694) at dilution of 1:100 (40x lens).



Immunohistochemistry of paraffin-embedded mouse spleen using NLRP3 antibody (CAB12694) at dilution of 1:100 (40x lens).