

POLR1E Rabbit Polyclonal Antibody



CAB12700

Product Information

Size:

20uL, 50uL, 100uL, 200uL

Observed MW:

53kDa

Calculated MW:

47kDa/53kDa

Applications:

WB IP

Reactivity:

Human, Mouse, Rat

Antibody Information

Recommended dilutions:

WB 1:500 - 1:2000 IP 1:50 - 1:100

Source:

Rabbit

Isotype:

IgG

Purification:

Affinity purification

Protein Background

Immunogen information

Gene ID:

64425

Uniprot

Q9GZS1

Synonyms:

POLR1E; PAF53; PRAF1

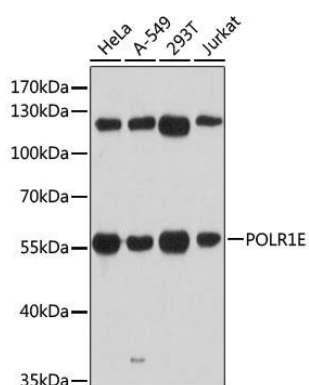
Immunogen:

Recombinant fusion protein containing a sequence corresponding to amino acids 1-419 of human POLR1E (NP_071935.1).

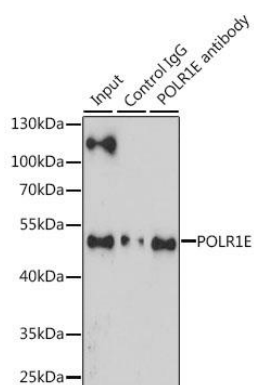
Storage:

Store at -20°C. Avoid freeze / thaw cycles. Buffer: PBS with 0.02% sodium azide, 50% glycerol, pH7.3.

Product Images



Western blot analysis of extracts of various cell lines, using POLR1E antibody (CAB12700) at 1:3000 dilution. Secondary antibody: HRP Goat Anti-Rabbit IgG (H+L) (CABS014) at 1:10000 dilution. Lysates/proteins: 25ug per lane. Blocking buffer: 3% nonfat dry milk in TBST. Detection: ECL Basic Kit (CABM00020). Exposure time: 30s.



Immunoprecipitation analysis of 200ug extracts of Jurkat cells, using 3 ug POLR1E antibody (CAB12700). Western blot was performed from the immunoprecipitate using POLR1E antibody (CAB12700) at a dilution of 1:1000.