

GUCY1A3 Rabbit Polyclonal Antibody



CAB12710

Product Information

Size:

20uL, 50uL, 100uL, 200uL

Observed MW:

77kDa

Calculated MW:

70kDa/77kDa

Applications:

WB IF

Reactivity:

Human, Mouse, Rat

Antibody Information

Recommended dilutions:

WB 1:1000 - 1:3000 IF 1:50 - 1:200

Source:

Rabbit

Isotype:

IgG

Purification:

Affinity purification

Protein Background

Soluble guanylate cyclases are heterodimeric proteins that catalyze the conversion of GTP to 3', 5'-cyclic GMP and pyrophosphate. The protein encoded by this gene is an alpha subunit of this complex and it interacts with a beta subunit to form the guanylate cyclase enzyme, which is activated by nitric oxide. Several transcript variants encoding a few different isoforms have been found for this gene.

Immunogen information

Gene ID:

2982

Uniprot

Q02108

Synonyms:

GUCY1A3; GC-SA3; GUC1A3; GUCA3; GUCSA3; GUCY1A1; MYMY6

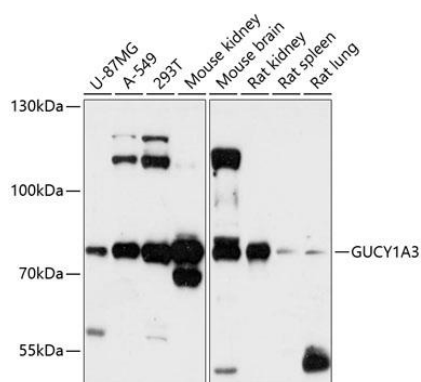
Immunogen:

Recombinant fusion protein containing a sequence corresponding to amino acids 1-120 of human GUCY1A3 (NP_000847.2).

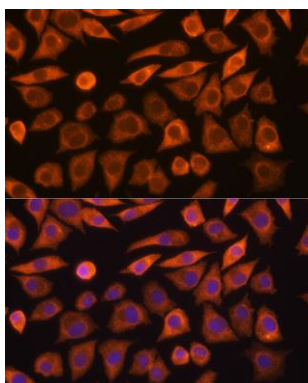
Storage:

Store at -20°C. Avoid freeze / thaw cycles. Buffer: PBS with 0.02% sodium azide, 50% glycerol, pH7.3.

Product Images



Western blot analysis of extracts of various cell lines, using GUCY1A3 antibody (CAB12710) at 1:3000 dilution. Secondary antibody: HRP Goat Anti-Rabbit IgG (H+L) (CABS014) at 1:10000 dilution. Lysates/proteins: 25ug per lane. Blocking buffer: 3% nonfat dry milk in TBST. Detection: ECL Enhanced Kit (CABM00021). Exposure time: 90s.



Immunofluorescence analysis of L929 cells using GUCY1A3 Rabbit pAb (CAB12710) at dilution of 1:100 (40x lens). Blue: DAPI for nuclear staining.