

[KO Validated] CD133 Rabbit Polyclonal Antibody



CAB12711

Product Information

Size:

20uL, 50uL, 100uL, 200uL

Observed MW:

115kDa

Calculated MW:

92kDa/93kDa/94kDa/96kDa/
97kDa

Applications:

WB IF IP

Reactivity:

Human, Mouse, Rat

Antibody Information

Recommended dilutions:

WB 1:1000 - 1:3000 IF 1:50
- 1:200 IP 1:50 - 1:200

Source:

Rabbit

Isotype:

IgG

Purification:

Affinity purification

Protein Background

This gene encodes a pentaspan transmembrane glycoprotein. The protein localizes to membrane protrusions and is often expressed on adult stem cells, where it is thought to function in maintaining stem cell properties by suppressing differentiation. Mutations in this gene have been shown to result in retinitis pigmentosa and Stargardt disease. Expression of this gene is also associated with several types of cancer. This gene is expressed from at least five alternative promoters that are expressed in a tissue-dependent manner. Multiple transcript variants encoding different isoforms have been found for this gene.

Immunogen information

Gene ID:

8842

Uniprot

O43490

Synonyms:

PROM1; AC133; CD133; CORD12; MCDR2; MSTP061; PROML1;
RP41; STGD4

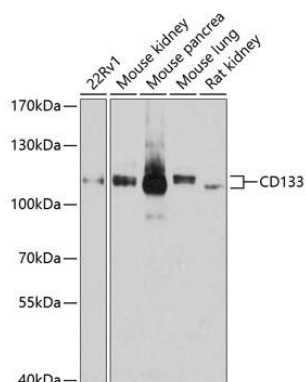
Immunogen:

A synthetic peptide corresponding to a sequence within amino acids 750-850 of human CD133 (NP_006008.1).

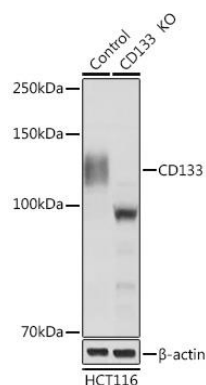
Storage:

Store at -20°C. Avoid freeze / thaw cycles. Buffer: PBS with 0.02% sodium azide, 50% glycerol, pH7.3.

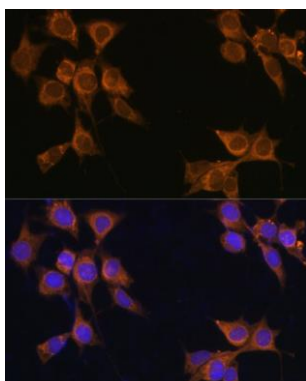
Product Images



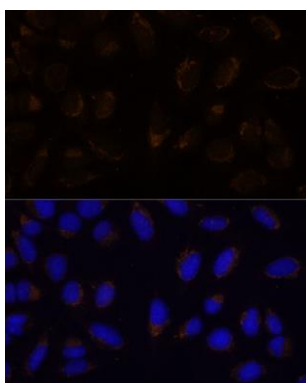
Western blot analysis of extracts of various cell lines, using CD133 antibody (CAB12711) at 1:3000 dilution. Secondary antibody: HRP Goat Anti-Rabbit IgG (H+L) (CABS014) at 1:10000 dilution. Lysates/proteins: 25ug per lane. Blocking buffer: 3% nonfat dry milk in TBST. Detection: ECL Basic Kit (CABM00020). Exposure time: 10s.



Western blot analysis of extracts from normal (control) and CD133 Rabbit pAb knockout (KO) HCT116 cells, using CD133 Rabbit pAb antibody (CAB12711) at 1:1000 dilution. Secondary antibody: HRP Goat Anti-Rabbit IgG (H+L) (CABS014) at 1:10000 dilution. Lysates/proteins: 25ug per lane. Blocking buffer: 3% nonfat dry milk in TBST. Detection: ECL Basic Kit (CABM00020). Exposure time: 30s.



Immunofluorescence analysis of NIH/3T3 cells using CD133 antibody (CAB12711) at dilution of 1:100. Blue: DAPI for nuclear staining.



Immunofluorescence analysis of U-2 OS cells using CD133 antibody (CAB12711) at dilution of 1:100. Blue: DAPI for nuclear staining.