

MDC1 Rabbit Polyclonal Antibody



CAB12714

Product Information

Size:

20uL, 50uL, 100uL, 200uL

Observed MW:

226kDa

Calculated MW:

116kDa/195kDa/197kDa/226
kDa

Applications:

WB IHC IF

Reactivity:

Human, Mouse

Antibody Information

Recommended dilutions:

WB 1:500 - 1:2000 IHC 1:50
- 1:200 IF 1:50 - 1:200

Source:

Rabbit

Isotype:

IgG

Purification:

Affinity purification

Protein Background

The protein encoded by this gene contains an N-terminal forkhead domain, two BRCA1 C-terminal (BRCT) motifs and a central domain with 13 repetitions of an approximately 41-amino acid sequence. The encoded protein is required to activate the intra-S phase and G2/M phase cell cycle checkpoints in response to DNA damage. This nuclear protein interacts with phosphorylated histone H2AX near sites of DNA double-strand breaks through its BRCT motifs, and facilitates recruitment of the ATM kinase and meiotic recombination 11 protein complex to DNA damage foci.

Immunogen information

Gene ID:

9656

Uniprot

Q14676

Synonyms:

MDC1; NFBD1

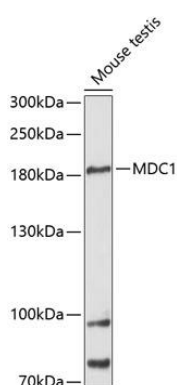
Immunogen:

A synthetic peptide corresponding to a sequence within amino acids 1-100 of human MDC1 (NP_055456.2).

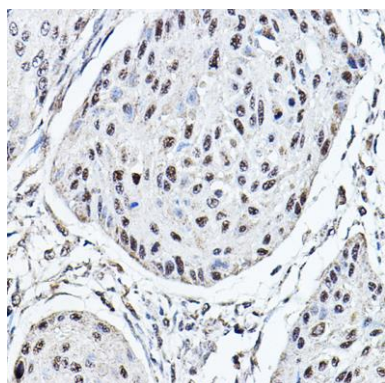
Storage:

Store at -20°C. Avoid freeze / thaw cycles. Buffer: PBS with 0.02% sodium azide, 50% glycerol, pH7.3.

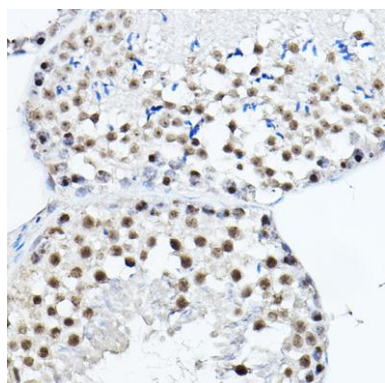
Product Images



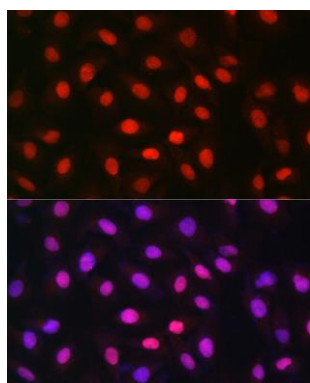
Western blot analysis of extracts of mouse testis, using MDC1 antibody (CAB12714) at 1:3000 dilution. Secondary antibody: HRP Goat Anti-Rabbit IgG (H+L) (CABS014) at 1:10000 dilution. Lysates/proteins: 25ug per lane. Blocking buffer: 3% nonfat dry milk in TBST. Detection: ECL Basic Kit (CABM00020). Exposure time: 90s.



Immunohistochemistry of paraffin-embedded human esophageal cancer using MDC1 Rabbit pAb (CAB12714) at dilution of 1:150 (40x lens).



Immunohistochemistry of paraffin-embedded mouse testis using MDC1 Rabbit pAb (CAB12714) at dilution of 1:150 (40x lens).



Immunofluorescence analysis of U-2 OS cells using MDC1 Rabbit pAb (CAB12714) at dilution of 1:150 (40x lens). Blue: DAPI for nuclear staining.