

AMPKa1/AMPKa2 Rabbit Polyclonal Antibody



CAB12718

Product Information

Size:

20uL, 50uL, 100uL, 200uL

Observed MW:

64kDa

Calculated MW:

64kDa/65kDa/62kDa

Applications:

WB IHC IF

Reactivity:

Human, Mouse, Rat

Antibody Information

Recommended dilutions:

WB 1:500 - 1:1000 IHC 1:50
- 1:100 IF 1:50 - 1:100

Source:

Rabbit

Isotype:

IgG

Purification:

Affinity purification

Protein Background

Immunogen information

Gene ID:

5562/5563

Uniprot

Q13131/P54646

Synonyms:

AMPKa1/AMPKa2

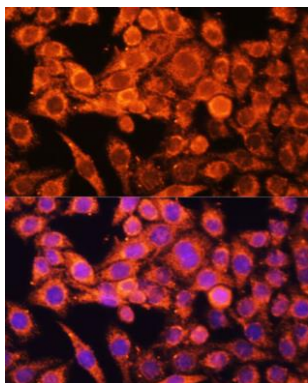
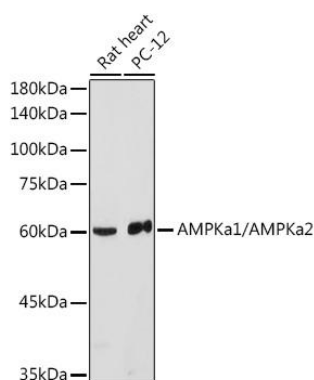
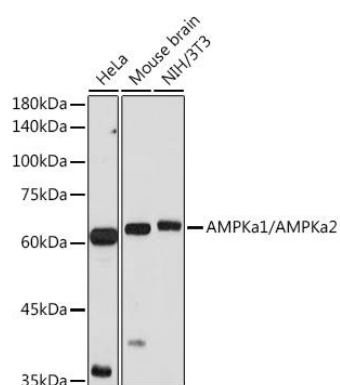
Immunogen:

Recombinant protein of human PRKAA1/PRKAA2

Storage:

Store at -20°C. Avoid freeze / thaw cycles. Buffer: PBS with 0.02% sodium azide, 50% glycerol, pH7.3.

Product Images



Western blot analysis of extracts of various cell lines, using AMPKa1/AMPKa2 antibody (CAB12718) at 1:500 dilution. Secondary antibody: HRP Goat Anti-Rabbit IgG (H+L) (CABS014) at 1:10000 dilution. Lysates/proteins: 25ug per lane. Blocking buffer: 3% nonfat dry milk in TBST. Detection: ECL Basic Kit (CABM00020). Exposure time: 90s.

Western blot analysis of extracts of various cell lines, using AMPKa1/AMPKa2 antibody (CAB12718) at 1:500 dilution. Secondary antibody: HRP Goat Anti-Rabbit IgG (H+L) (CABS014) at 1:10000 dilution. Lysates/proteins: 25ug per lane. Blocking buffer: 3% nonfat dry milk in TBST. Detection: ECL Basic Kit (CABM00020). Exposure time: 180s.

Immunofluorescence analysis of HeLa cells using AMPKa1/AMPKa2 Polyclonal Antibody (CAB12718) at dilution of 1:100 (40x lens). Blue: DAPI for nuclear staining.