

# SLC25A19 Rabbit Polyclonal Antibody



CAB12727

## Product Information

### Size:

20uL, 50uL, 100uL, 200uL

### Observed MW:

Refer to Figures

### Calculated MW:

29kDa/35kDa

### Applications:

WB IF

### Reactivity:

Human, Mouse

## Antibody Information

### Recommended dilutions:

WB 1:1000 - 1:2000 IF 1:50  
- 1:200

### Source:

Rabbit

### Isotype:

IgG

### Purification:

Affinity purification

## Protein Background

This gene encodes a mitochondrial protein that is a member of the solute carrier family. Although this protein was initially thought to be the mitochondrial deoxynucleotide carrier involved in the uptake of deoxynucleotides into the matrix of the mitochondria, further studies have demonstrated that this protein instead functions as the mitochondrial thiamine pyrophosphate carrier, which transports thiamine pyrophosphates into mitochondria. Mutations in this gene cause microcephaly, Amish type, a metabolic disease that results in severe congenital microcephaly, severe 2-ketoglutaric aciduria, and death within the first year. Multiple alternatively spliced variants, encoding the same protein, have been identified for this gene.

## Immunogen information

### Gene ID:

60386

### Uniprot

Q9HC21

### Synonyms:

SLC25A19; DNC; MCPHA; MUP1; THMD3; THMD4; TPC

### Immunogen:

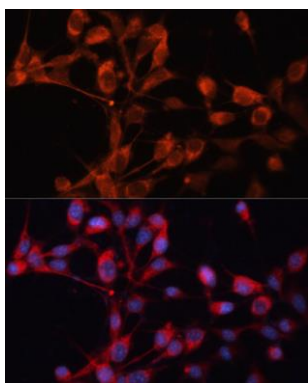
Recombinant fusion protein containing a sequence corresponding to amino acids 1-80 of human SLC25A19 (NP\_068380.3).

### Storage:

Store at -20°C. Avoid freeze / thaw cycles. Buffer: PBS with 0.02% sodium azide, 50% glycerol, pH7.3.

## Product Images

---



Immunofluorescence analysis of NIH/3T3 cells using SLC25A19 antibody (CAB12727) at dilution of 1:100. Blue: DAPI for nuclear staining.