

# TH Rabbit Polyclonal Antibody



CAB12756

## Product Information

### Size:

20uL, 50uL, 100uL, 200uL

### Observed MW:

60kDa

### Calculated MW:

44kDa/45kDa/55kDa/56kDa/  
58kDa

### Applications:

WB IHC IF

### Reactivity:

Human, Mouse, Rat

## Protein Background

The protein encoded by this gene is involved in the conversion of tyrosine to dopamine. It is the rate-limiting enzyme in the synthesis of catecholamines, hence plays a key role in the physiology of adrenergic neurons. Mutations in this gene have been associated with autosomal recessive Segawa syndrome. Alternatively spliced transcript variants encoding different isoforms have been noted for this gene.

## Immunogen information

### Gene ID:

7054

### Uniprot

P07101

### Synonyms:

DYT14; DYT5b; TYH; TH

## Antibody Information

### Recommended dilutions:

WB 1:500 - 1:2000 IHC 1:50  
- 1:200 IF 1:50 - 1:200

### Source:

Rabbit

### Isotype:

IgG

### Purification:

Affinity purification

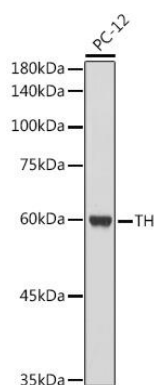
### Immunogen:

Recombinant fusion protein containing a sequence corresponding to amino acids 1-190 of human TH (NP\_000351.2).

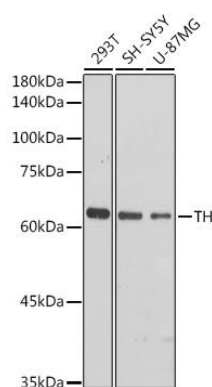
### Storage:

Store at -20°C. Avoid freeze / thaw cycles. Buffer: PBS with 0.02% sodium azide, 50% glycerol, pH7.3.

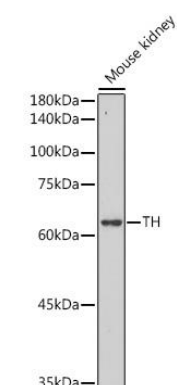
## Product Images



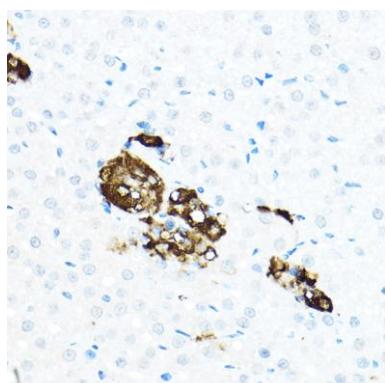
Western blot analysis of extracts of PC-12 cells, using TH antibody (CAB12756) at 1:500 dilution. Secondary antibody: HRP Goat Anti-Rabbit IgG (H+L) (CABS014) at 1:10000 dilution. Lysates/proteins: 25ug per lane. Blocking buffer: 3% nonfat dry milk in TBST. Detection: ECL Basic Kit (CABM00020). Exposure time: 1s.



Western blot analysis of extracts of various cell lines, using TH antibody (CAB12756) at 1:500 dilution. Secondary antibody: HRP Goat Anti-Rabbit IgG (H+L) (CABS014) at 1:10000 dilution. Lysates/proteins: 25ug per lane. Blocking buffer: 3% nonfat dry milk in TBST. Detection: ECL Basic Kit (CABM00020). Exposure time: 30s.



Western blot analysis of extracts of Mouse kidney, using TH antibody (CAB12756) at 1:500 dilution. Secondary antibody: HRP Goat Anti-Rabbit IgG (H+L) (CABS014) at 1:10000 dilution. Lysates/proteins: 25ug per lane. Blocking buffer: 3% nonfat dry milk in TBST. Detection: ECL Basic Kit (CABM00020). Exposure time: 180s.



Immunohistochemistry of paraffin-embedded rat adrenal gland using TH Rabbit pAb (CAB12756) at dilution of 1:50 (40x lens).