

Kdm6b Rabbit Polyclonal Antibody



CAB12763

Product Information

Size:

20uL, 50uL, 100uL, 200uL

Observed MW:

170kDa

Calculated MW:

176kDa

Applications:

WB IF

Reactivity:

Human, Mouse

Antibody Information

Recommended dilutions:

WB 1:500 - 1:2000 IF 1:50 - 1:200

Source:

Rabbit

Isotype:

IgG

Purification:

Affinity purification

Protein Background

Immunogen information

Gene ID:

216850

Uniprot

Synonyms:

KDM6B; JMJD3; Kdm6b

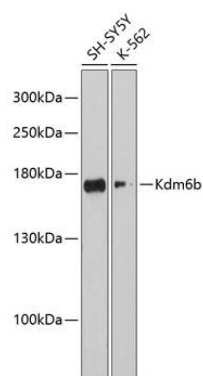
Immunogen:

Recombinant fusion protein containing a sequence corresponding to amino acids 265-450 of mouse Kdm6b (NP_001017426.1).

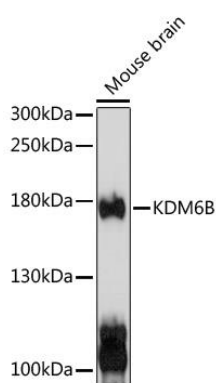
Storage:

Store at -20°C. Avoid freeze / thaw cycles. Buffer: PBS with 0.02% sodium azide, 50% glycerol, pH7.3.

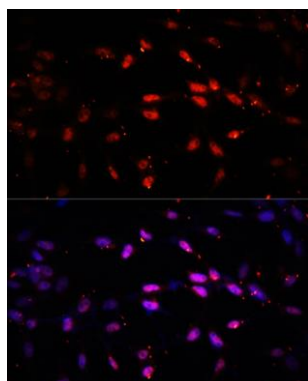
Product Images



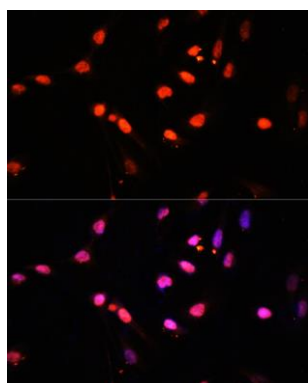
Western blot analysis of extracts of various cell lines, using Kdm6b antibody (CAB12763) at 1:3000 dilution. Secondary antibody: HRP Goat Anti-Rabbit IgG (H+L) (CABS014) at 1:10000 dilution. Lysates/proteins: 25ug per lane. Blocking buffer: 3% nonfat dry milk in TBST. Detection: ECL Enhanced Kit (CABM00021). Exposure time: 90s.



Western blot analysis of extracts of mouse brain, using KDM6B antibody (CAB12763) at 1:1000 dilution. Secondary antibody: HRP Goat Anti-Rabbit IgG (H+L) (CABS014) at 1:10000 dilution. Lysates/proteins: 25ug per lane. Blocking buffer: 3% nonfat dry milk in TBST. Detection: ECL Basic Kit (CABM00020). Exposure time: 10s.



Immunofluorescence analysis of NIH/3T3 cells using KDM6B antibody (CAB12763) at dilution of 1:100. Blue: DAPI for nuclear staining.



Immunofluorescence analysis of U2OS cells using KDM6B antibody (CAB12763) at dilution of 1:100. Blue: DAPI for nuclear staining.