

Kdm6b Rabbit Polyclonal Antibody



CAB12764

Product Information

Size:

20uL, 50uL, 100uL, 200uL

Observed MW:

200kDa

Calculated MW:

176kDa

Applications:

WB

Reactivity:

Rat

Antibody Information

Recommended dilutions:

WB 1:500 - 1:2000

Source:

Rabbit

Isotype:

IgG

Purification:

Affinity purification

Protein Background

Immunogen information

Gene ID:

216850

Uniprot

Synonyms:

KDM6B; JMJD3; Kdm6b

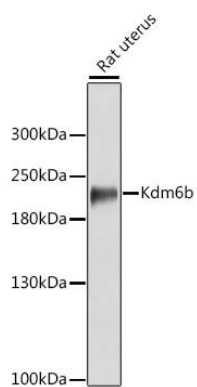
Immunogen:

Recombinant fusion protein containing a sequence corresponding to amino acids 1161-1350 of mouse Kdm6b (NP_001017426.1).

Storage:

Store at -20°C. Avoid freeze / thaw cycles. Buffer: PBS with 0.02% sodium azide, 50% glycerol, pH7.3.

Product Images



Western blot - Kdm6b Rabbit pAb (CAB12764)