

PEBP1 Rabbit Monoclonal Antibody



CAB12768

Product Information

Size:

20uL, 50uL, 100uL, 200uL

Observed MW:

21KDa

Calculated MW:

21kDa

Applications:

WB

Reactivity:

Human, Mouse, Rat

Antibody Information

Recommended dilutions:

WB 1:500 - 1:2000

Source:

Rabbit

Isotype:

IgG

Purification:

Affinity purification

Protein Background

This gene encodes a member of the phosphatidylethanolamine-binding family of proteins and has been shown to modulate multiple signaling pathways, including the MAP kinase (MAPK), NF-kappa B, and glycogen synthase kinase-3 (GSK-3) signaling pathways. The encoded protein can be further processed to form a smaller cleavage product, hippocampal cholinergic neurostimulating peptide (HCNP), which may be involved in neural development. This gene has been implicated in numerous human cancers and may act as a metastasis suppressor gene. Multiple pseudogenes of this gene have been identified in the genome. [provided by RefSeq, Jul 2015]

Immunogen information

Gene ID:

5037

Uniprot

P30086

Synonyms:

HCNP; HCNPPp; HEL-210; HEL-S-34; HEL-S-96; PBP; PEBP; PEBP-1; RKIP

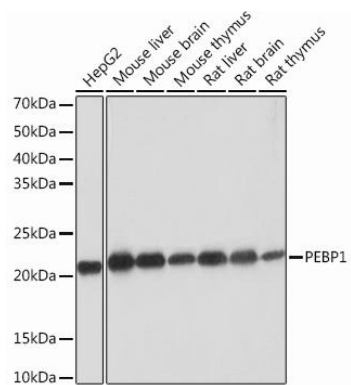
Immunogen:

A synthesized peptide derived from human PEBP1

Storage:

Store at -20°C. Avoid freeze / thaw cycles. Buffer: PBS with 0.02% sodium azide, 0.05% BSA, 50% glycerol, pH7.3.

Product Images



Western blot - PEBP1 Rabbit mAb (CAB12768)