

VEGF Receptor 1 Rabbit Polyclonal Antibody



CAB1277

Product Information

Size:

20uL, 50uL, 100uL, 200uL

Observed MW:

151kDa

Calculated MW:

39kDa/41kDa/52-
82kDa/150kDa

Applications:

WB IHC

Reactivity:

Human, Mouse, Rat

Antibody Information

Recommended dilutions:

WB 1:500 - 1:2000 IHC 1:50
- 1:100

Source:

Rabbit

Isotype:

IgG

Purification:

Affinity purification

Protein Background

This gene encodes a member of the vascular endothelial growth factor receptor (VEGFR) family. VEGFR family members are receptor tyrosine kinases (RTKs) which contain an extracellular ligand-binding region with seven immunoglobulin (Ig)-like domains, a transmembrane segment, and a tyrosine kinase (TK) domain within the cytoplasmic domain. This protein binds to VEGFR-A, VEGFR-B and placental growth factor and plays an important role in angiogenesis and vasculogenesis. Expression of this receptor is found in vascular endothelial cells, placental trophoblast cells and peripheral blood monocytes. Multiple transcript variants encoding different isoforms have been found for this gene. Isoforms include a full-length transmembrane receptor isoform and shortened, soluble isoforms. The soluble isoforms are associated with the onset of pre-eclampsia.

Immunogen information

Gene ID:

2321

Uniprot

P17948

Synonyms:

FLT; FLT-1; VEGFR-1; VEGFR1; FLT1

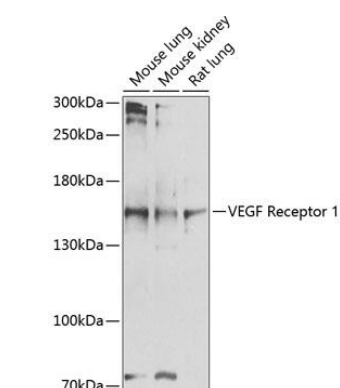
Immunogen:

Recombinant fusion protein containing a sequence corresponding to amino acids 20-300 of human VEGF Receptor 1 (NP_001153392.1).

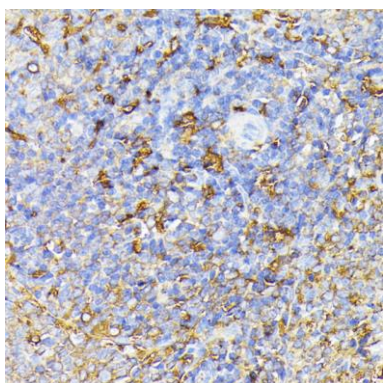
Storage:

Store at -20°C. Avoid freeze / thaw cycles. Buffer: PBS with 0.02% sodium azide, 50% glycerol, pH7.3.

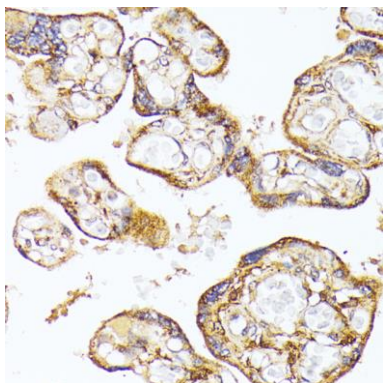
Product Images



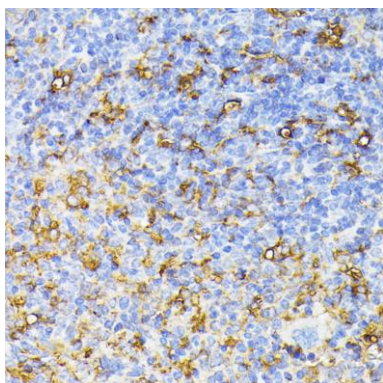
Western blot analysis of extracts of various cell lines, using VEGF Receptor 1 antibody (CAB1277) at 1:1000 dilution. Secondary antibody: HRP Goat Anti-Rabbit IgG (H+L) (CABS014) at 1:10000 dilution. Lysates/proteins: 25ug per lane. Blocking buffer: 3% nonfat dry milk in TBST. Detection: ECL Enhanced Kit (CABM00021). Exposure time: 30s.



Immunohistochemistry of paraffin-embedded rat spleen using FLT1 antibody (CAB1277) at dilution of 1:100 (40x lens).



Immunohistochemistry of paraffin-embedded human placenta using FLT1 antibody (CAB1277) at dilution of 1:100 (40x lens).



Immunohistochemistry of paraffin-embedded mouse spleen using FLT1 antibody (CAB1277) at dilution of 1:100 (40x lens).