

Mitofusin 2 Rabbit Polyclonal Antibody



CAB12771

Product Information

Size:

20uL, 50uL, 100uL, 200uL

Observed MW:

100kDa

Calculated MW:

50kDa/86kDa

Applications:

WB IHC IF IP

Reactivity:

Human, Mouse, Rat

Antibody Information

Recommended dilutions:

WB 1:500 - 1:2000 IHC 1:50
- 1:200 IF 1:50 - 1:200 IP
1:50 - 1:200

Source:

Rabbit

Isotype:

IgG

Purification:

Affinity purification

Protein Background

This gene encodes a mitochondrial membrane protein that participates in mitochondrial fusion and contributes to the maintenance and operation of the mitochondrial network. This protein is involved in the regulation of vascular smooth muscle cell proliferation, and it may play a role in the pathophysiology of obesity. Mutations in this gene cause Charcot-Marie-Tooth disease type 2A2, and hereditary motor and sensory neuropathy VI, which are both disorders of the peripheral nervous system. Defects in this gene have also been associated with early-onset stroke. Two transcript variants encoding the same protein have been identified.

Immunogen information

Gene ID:

9927

Uniprot

O95140

Synonyms:

CMT2A; CMT2A2; CMT2A2A; CMT2A2B; CPRP1; HMSN6A; HSG;
MARF; MFN2; Mitofusin 2

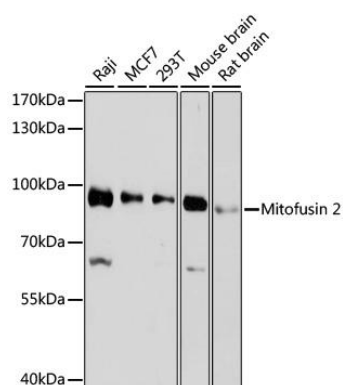
Immunogen:

A synthetic peptide corresponding to a sequence within amino acids 500-600 of human Mitofusin 2 (NP_001121132.1).

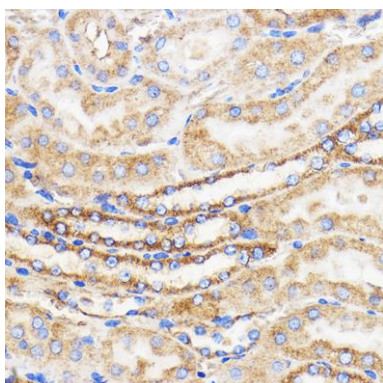
Storage:

Store at -20°C. Avoid freeze / thaw cycles. Buffer: PBS with 0.02% sodium azide, 50% glycerol, pH7.3.

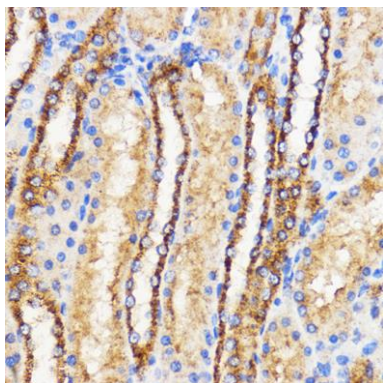
Product Images



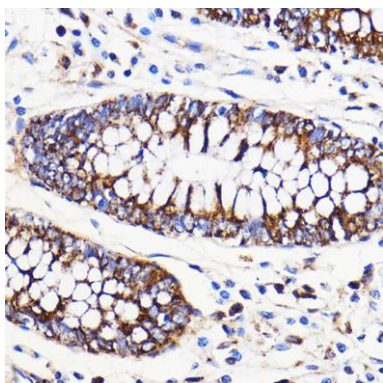
Western blot analysis of extracts of various cell lines, using Mitofusin 2 antibody (CAB12771) at 1:1000 dilution. Secondary antibody: HRP Goat Anti-Rabbit IgG (H+L) (CABS014) at 1:10000 dilution. Lysates/proteins: 25ug per lane. Blocking buffer: 3% nonfat dry milk in TBST. Detection: ECL Basic Kit (CABM00020). Exposure time: 90s.



Immunohistochemistry of paraffin-embedded Mouse kidney using Mitofusin 2 Rabbit pAb (CAB12771) at dilution of 1:100 (40x lens).



Immunohistochemistry of paraffin-embedded Rat kidney using Mitofusin 2 Rabbit pAb (CAB12771) at dilution of 1:100 (40x lens).



Immunohistochemistry of paraffin-embedded Human colon using Mitofusin 2 Rabbit pAb (CAB12771) at dilution of 1:100 (40x lens).