

WDR81 Rabbit Polyclonal Antibody



CAB12780

Product Information

Size:

20uL, 50uL, 100uL, 200uL

Observed MW:

260kDa

Calculated MW:

74kDa/77kDa/79kDa/95kDa/
197kDa/211kDa

Applications:

WB IF

Reactivity:

Human, Mouse, Rat

Protein Background

This gene encodes a multi-domain transmembrane protein, which is predominantly expressed in the brain. Mutations in this gene are associated with autosomal recessive cerebellar ataxia, mental retardation, and dysequilibrium syndrome-2. Alternatively spliced transcript variants encoding different isoforms have been found for this gene.

Antibody Information

Recommended dilutions:

WB 1:500 - 1:2000
IF 1:50 - 1:200

Source:

Rabbit

Isotype:

IgG

Purification:

Affinity purification

Immunogen information

Gene ID:

124997

Uniprot

Q562E7

Synonyms:

WDR81; CAMRQ2; PPP1R166; SORF-2

Immunogen:

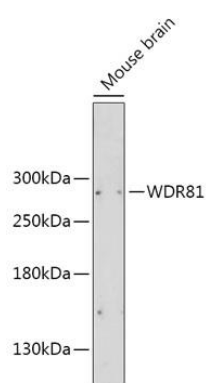
Recombinant fusion protein containing a sequence corresponding to amino acids 360-600 of human WDR81 (NP_689561.2).

Storage:

Store at -20°C. Avoid freeze / thaw cycles.

Buffer: PBS with 0.02% sodium azide, 50% glycerol, pH7.3.

Product Images



Western blot analysis of extracts of Mouse brain, using WDR81 antibody (CAB12780) at 1:2000 dilution.

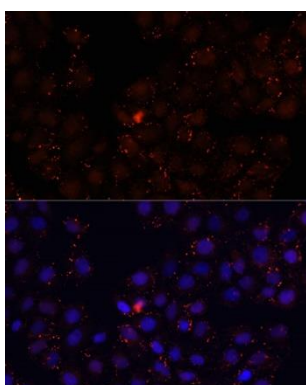
Secondary antibody: HRP Goat Anti-Rabbit IgG (H+L) (CABS014) at 1:10000 dilution.

Lysates/proteins: 25ug per lane.

Blocking buffer: 3% nonfat dry milk in TBST.

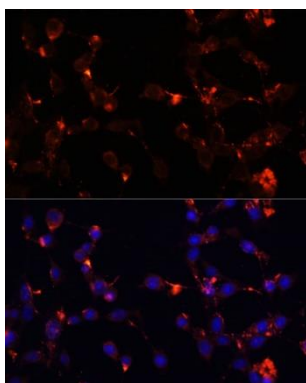
Detection: ECL Basic Kit (AbGn00020).

Exposure time: 90s.



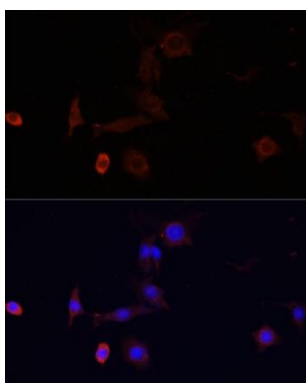
Immunofluorescence analysis of HeLa cells using WDR81 antibody (CAB12780) at dilution of 1:100.

Blue: DAPI for nuclear staining.



Immunofluorescence analysis of NIH/3T3 cells using WDR81 antibody (CAB12780) at dilution of 1:100.

Blue: DAPI for nuclear staining.



Immunofluorescence analysis of PC12 cells using WDR81 antibody (CAB12780) at dilution of 1:100.

Blue: DAPI for nuclear staining.