

# FEM1B Rabbit Polyclonal Antibody



CAB12802

## Product Information

### Size:

20uL, 50uL, 100uL, 200uL

### Observed MW:

75kDa

### Calculated MW:

70kDa

### Applications:

WB

### Reactivity:

Human

## Protein Background

This gene encodes an ankyrin repeat protein that belongs to the death receptor-associated family of proteins and plays a role in mediating apoptosis. The encoded protein is also thought to function in the replication stress-induced checkpoint signaling pathway via interaction with checkpoint kinase 1.

## Immunogen information

### Gene ID:

10116

### Uniprot

Q9UK73

### Synonyms:

FEM1B; F1A-ALPHA; F1AA; FEM1-beta

## Antibody Information

### Recommended dilutions:

WB 1:500 - 1:1000

### Source:

Rabbit

### Isotype:

IgG

### Purification:

Affinity purification

### Immunogen:

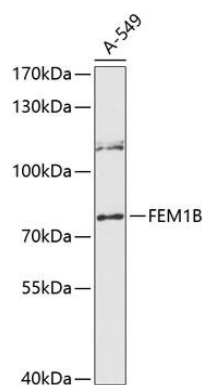
Recombinant fusion protein containing a sequence corresponding to amino acids 368-627 of human FEM1B (NP\_056137.1).

### Storage:

Store at -20°C. Avoid freeze / thaw cycles. Buffer: PBS with 0.02% sodium azide, 50% glycerol, pH7.3.

## Product Images

---



Western blot analysis of extracts of A-549 cells, using FEM1B antibody (CAB12802) at 1:3000 dilution. Secondary antibody: HRP Goat Anti-Rabbit IgG (H+L) (CABS014) at 1:10000 dilution. Lysates/proteins: 25ug per lane. Blocking buffer: 3% nonfat dry milk in TBST. Detection: ECL Enhanced Kit (CABM00021). Exposure time: 90s.