

ITIH4 Rabbit Polyclonal Antibody



CAB12807

Product Information

Size:

20uL, 50uL, 100uL, 200uL

Observed MW:

103kDa

Calculated MW:

93kDa/99kDa/101kDa/103kDa

Applications:

WB

Reactivity:

Human

Protein Background

The protein encoded by this gene is secreted into the blood, where it is cleaved by plasma kallikrein into two smaller forms. Expression of this gene has been detected only in liver, and it seems to be upregulated during surgical trauma. This gene is part of a cluster of similar genes on chromosome 3. Two transcript variants encoding different isoforms have been found for this gene.

Immunogen information

Gene ID:

3700

Uniprot

Q14624

Synonyms:

ITIH4; GP120; H4P; IHRP; ITI-HC4; ITIHL1; PK-120; PK120

Antibody Information

Recommended dilutions:

WB 1:500 - 1:2000

Source:

Rabbit

Isotype:

IgG

Purification:

Affinity purification

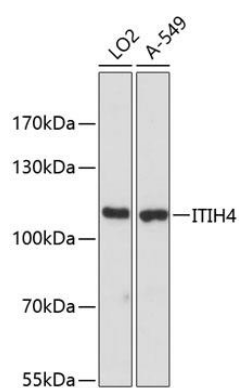
Immunogen:

Recombinant fusion protein containing a sequence corresponding to amino acids 689-930 of human ITIH4 (NP_002209.2).

Storage:

Store at -20°C. Avoid freeze / thaw cycles. Buffer: PBS with 0.02% sodium azide, 50% glycerol, pH7.3.

Product Images



Western blot analysis of extracts of various cell lines, using ITIH4 antibody (CAB12807) at 1:3000 dilution. Secondary antibody: HRP Goat Anti-Rabbit IgG (H+L) (CABS014) at 1:10000 dilution. Lysates/proteins: 25ug per lane. Blocking buffer: 3% nonfat dry milk in TBST. Detection: ECL Basic Kit (CABM00020). Exposure time: 10s.