

PHOSPHO2 Rabbit Polyclonal Antibody



CAB12816

Product Information

Size:

20uL, 50uL, 100uL, 200uL

Observed MW:

27kDa

Calculated MW:

27kDa

Applications:

WB IF

Reactivity:

Human, Mouse, Rat

Antibody Information

Recommended dilutions:

WB 1:500 - 1:1000 IF 1:50 - 1:200

Source:

Rabbit

Isotype:

IgG

Purification:

Affinity purification

Protein Background

Immunogen information

Gene ID:

493911

Uniprot

Q8TCD6

Synonyms:

PHOSPHO2; phosphatase; orphan 2

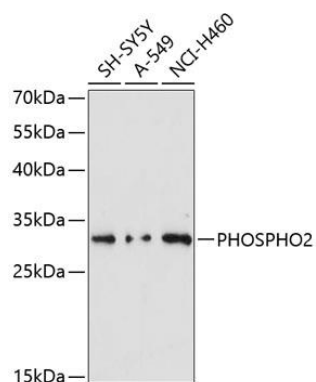
Immunogen:

Recombinant fusion protein containing a sequence corresponding to amino acids 1-100 of human PHOSPHO2 (NP_001008489.1).

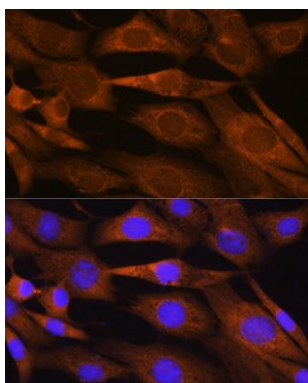
Storage:

Store at -20°C. Avoid freeze / thaw cycles. Buffer: PBS with 0.02% sodium azide, 50% glycerol, pH7.3.

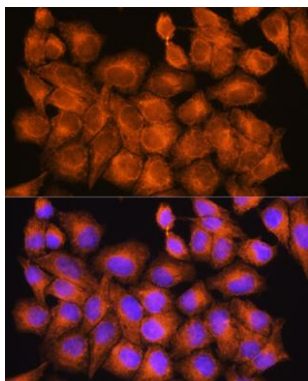
Product Images



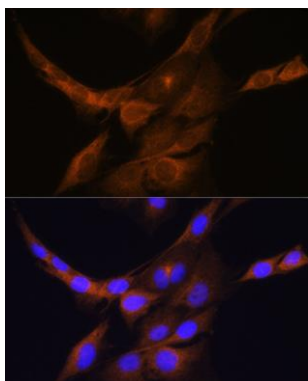
Western blot analysis of extracts of various cell lines, using PHOSPHO2 antibody (CAB12816) at 1:3000 dilution. Secondary antibody: HRP Goat Anti-Rabbit IgG (H+L) (CABS014) at 1:10000 dilution. Lysates/proteins: 25ug per lane. Blocking buffer: 3% nonfat dry milk in TBST. Detection: ECL Enhanced Kit (CABM00021). Exposure time: 90s.



Immunofluorescence analysis of NIH/3T3 cells using PHOSPHO2 Rabbit pAb (CAB12816) at dilution of 1:100. Blue: DAPI for nuclear staining.



Immunofluorescence analysis of HeLa cells using PHOSPHO2 Rabbit pAb (CAB12816) at dilution of 1:100. Blue: DAPI for nuclear staining.



Immunofluorescence analysis of C6 cells using PHOSPHO2 Rabbit pAb (CAB12816) at dilution of 1:100. Blue: DAPI for nuclear staining.