

SLC9A8 Rabbit Polyclonal Antibody



CAB12829

Product Information

Size:

20uL, 50uL, 100uL, 200uL

Observed MW:

65kDa

Calculated MW:

65kDa/67kDa

Applications:

WB

Reactivity:

Human

Antibody Information

Recommended dilutions:

WB 1:1000 - 1:2000

Source:

Rabbit

Isotype:

IgG

Purification:

Affinity purification

Protein Background

Immunogen information

Gene ID:

23315

Uniprot

Q9Y2E8

Synonyms:

SLC9A8; NHE-8; NHE8

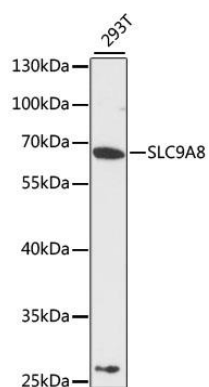
Immunogen:

Recombinant fusion protein containing a sequence corresponding to amino acids 472-581 of human SLC9A8 (NP_056081.1).

Storage:

Store at -20°C. Avoid freeze / thaw cycles. Buffer: PBS with 0.02% sodium azide, 50% glycerol, pH7.3.

Product Images



Western blot analysis of extracts of 293T cells, using SLC9A8 antibody (CAB12829) at 1:3000 dilution. Secondary antibody: HRP Goat Anti-Rabbit IgG (H+L) (CABS014) at 1:10000 dilution. Lysates/proteins: 25ug per lane. Blocking buffer: 3% nonfat dry milk in TBST. Detection: ECL Basic Kit (CABM00020). Exposure time: 90s.