

# CDK11B Rabbit Polyclonal Antibody



CAB12830

## Product Information

### Size:

20uL, 50uL, 100uL, 200uL

### Observed MW:

110kDa

### Calculated MW:

49-92kDa

### Applications:

WB IF

### Reactivity:

Human, Mouse

## Antibody Information

### Recommended dilutions:

WB 1:500 - 1:2000 IF 1:50 - 1:200

### Source:

Rabbit

### Isotype:

IgG

### Purification:

Affinity purification

## Protein Background

This gene encodes a member of the serine/threonine protein kinase family. Members of this kinase family are known to be essential for eukaryotic cell cycle control. Due to a segmental duplication, this gene shares very high sequence identity with a neighboring gene. These two genes are frequently deleted or altered in neuroblastoma. The protein kinase encoded by this gene can be cleaved by caspases and may play a role in cell apoptosis. Alternative splicing results in multiple transcript variants.

## Immunogen information

### Gene ID:

984

### Uniprot

P21127

### Synonyms:

CDK11B; CDC2L1; CDK11; CDK11-p110; CDK11-p46; CDK11-p58; CLK-1; PITSLREA; PK58; p58; p58CDC2L1; p58CLK-1

### Immunogen:

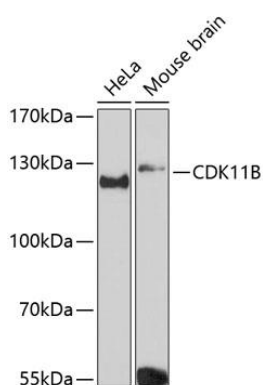
Recombinant fusion protein containing a sequence corresponding to amino acids 1-130 of human CDK11B (NP\_277021.2).

### Storage:

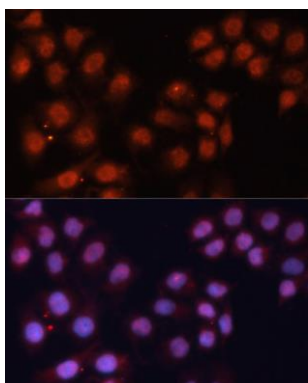
Store at -20°C. Avoid freeze / thaw cycles. Buffer: PBS with 0.02% sodium azide, 50% glycerol, pH7.3.

## Product Images

---



Western blot analysis of extracts of various cell lines, using CDK11B Antibody (CAB12830) at 1:3000 dilution. Secondary antibody: HRP Goat Anti-Rabbit IgG (H+L) (CABS014) at 1:10000 dilution. Lysates/proteins: 25ug per lane. Blocking buffer: 3% nonfat dry milk in TBST. Detection: ECL Basic Kit (CABM00020). Exposure time: 90s.



Immunofluorescence analysis of HeLa cells using CDK11B antibody (CAB12830) at dilution of 1:100. Blue: DAPI for nuclear staining.