

KCNK1 Rabbit Polyclonal Antibody



CAB12835

Product Information

Size:

20uL, 50uL, 100uL, 200uL

Observed MW:

38kDa

Calculated MW:

38kDa

Applications:

WB IHC

Reactivity:

Human, Mouse, Rat

Protein Background

This gene encodes one of the members of the superfamily of potassium channel proteins containing two pore-forming P domains. The product of this gene has not been shown to be a functional channel, however, it may require other non-pore-forming proteins for activity.

Immunogen information

Gene ID:

3775

Uniprot

O00180

Synonyms:

KCNK1; DPK; HOHO; K2P1; K2p1.1; KCNO1; TWIK-1; TWIK1

Antibody Information

Recommended dilutions:

WB 1:500 - 1:2000 IHC 1:50
- 1:200

Source:

Rabbit

Isotype:

IgG

Purification:

Affinity purification

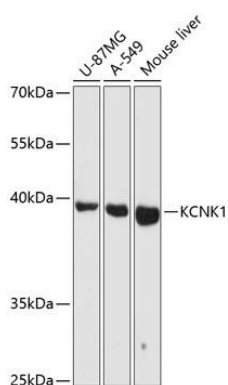
Immunogen:

Recombinant fusion protein containing a sequence corresponding to amino acids 267-336 of human KCNK1 (NP_002236.1).

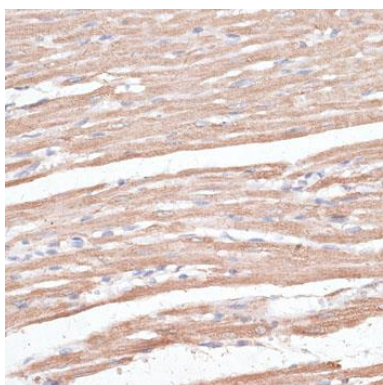
Storage:

Store at -20°C. Avoid freeze / thaw cycles. Buffer: PBS with 0.02% sodium azide, 50% glycerol, pH7.3.

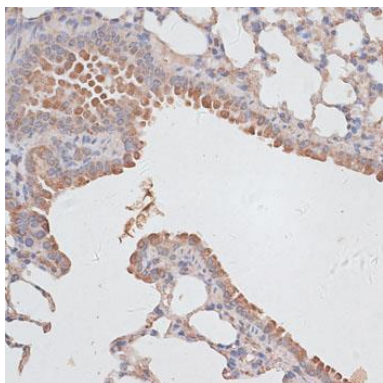
Product Images



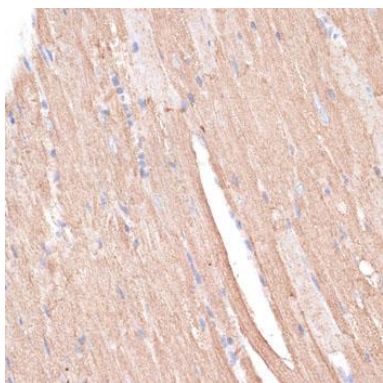
Western blot analysis of extracts of various cell lines, using KCNK1 antibody (CAB12835) at 1:3000 dilution. Secondary antibody: HRP Goat Anti-Rabbit IgG (H+L) (CABS014) at 1:10000 dilution. Lysates/proteins: 25ug per lane. Blocking buffer: 3% nonfat dry milk in TBST. Detection: ECL Basic Kit (CABM00020). Exposure time: 30s.



Immunohistochemistry of paraffin-embedded rat heart using KCNK1 antibody (CAB12835) at dilution of 1:100 (40x lens).



Immunohistochemistry of paraffin-embedded mouse lung using KCNK1 antibody (CAB12835) at dilution of 1:100 (40x lens).



Immunohistochemistry of paraffin-embedded mouse heart using KCNK1 antibody (CAB12835) at dilution of 1:100 (40x lens).