

MCF2 Rabbit Polyclonal Antibody



CAB12839

Product Information

Size:

20uL, 50uL, 100uL, 200uL

Observed MW:

108kDa

Calculated MW:

95kDa/100kDa/107kDa/109kDa/114kDa/116kDa

Applications:

WB

Reactivity:

Human, Mouse

Antibody Information

Recommended dilutions:

WB 1:500 - 1:2000

Source:

Rabbit

Isotype:

IgG

Purification:

Affinity purification

Protein Background

The oncogenic protein encoded by this gene is a guanine nucleotide exchange factor (GEF) that exerts control over some members of the Rho family of small GTPases. Several transcript variants encoding different isoforms have been found for this gene. These isoforms exhibit different expression patterns and varying levels of GEF activity.

Immunogen information

Gene ID:

4168

Uniprot

P10911

Synonyms:

MCF2; ARHGEF21; DBL

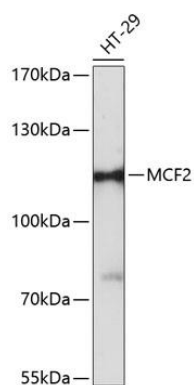
Immunogen:

Recombinant fusion protein containing a sequence corresponding to amino acids 872-1001 of human MCF2 (NP_001165347.1).

Storage:

Store at -20°C. Avoid freeze / thaw cycles. Buffer: PBS with 0.02% sodium azide, 50% glycerol, pH7.3.

Product Images



Western blot analysis of extracts of HT-29 cells, using MCF2 antibody (CAB12839) at 1:3000 dilution. Secondary antibody: HRP Goat Anti-Rabbit IgG (H+L) (CABS014) at 1:10000 dilution. Lysates/proteins: 25ug per lane. Blocking buffer: 3% nonfat dry milk in TBST. Detection: ECL Basic Kit (CABM00020). Exposure time: 10s.