

# POLE2 Rabbit Polyclonal Antibody



CAB12842

---

## Product Information

**Size:**

20uL, 50uL, 100uL, 200uL

**Observed MW:**

59kDa

**Calculated MW:**

56kDa/59kDa

**Applications:**

WB

**Reactivity:**

Human, Mouse

## Protein Background

DNA polymerase epsilon, which is involved in DNA repair and replication, is composed of a large catalytic subunit and a small accessory subunit. The protein encoded by this gene represents the small subunit (B). Defects in this gene have been linked to colorectal cancer and to combined immunodeficiency.

## Immunogen information

**Gene ID:**

5427

**Uniprot**

P56282

**Synonyms:**

POLE2; DPE2

## Antibody Information

**Recommended dilutions:**

WB 1:500 - 1:2000

**Source:**

Rabbit

**Isotype:**

IgG

**Purification:**

Affinity purification

**Immunogen:**

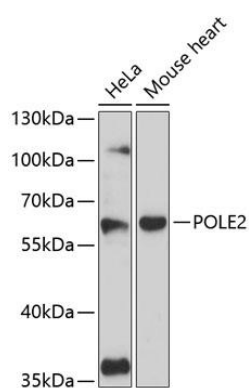
Recombinant fusion protein containing a sequence corresponding to amino acids 1-290 of human POLE2 (NP\_002683.2).

**Storage:**

Store at -20°C. Avoid freeze / thaw cycles. Buffer: PBS with 0.02% sodium azide, 50% glycerol, pH7.3.

## Product Images

---



Western blot analysis of extracts of various cell lines, using POLE2 antibody (CAB12842) at 1:3000 dilution. Secondary antibody: HRP Goat Anti-Rabbit IgG (H+L) (CABS014) at 1:10000 dilution. Lysates/proteins: 25ug per lane. Blocking buffer: 3% nonfat dry milk in TBST. Detection: ECL Basic Kit (CABM00020). Exposure time: 90s.