

SLC27A1 Rabbit Polyclonal Antibody



CAB12847

Product Information

Size:

20uL, 50uL, 100uL, 200uL

Observed MW:

71kDa

Calculated MW:

51kDa/71kDa

Applications:

WB

Reactivity:

Human, Mouse, Rat

Antibody Information

Recommended dilutions:

WB 1:1000 - 1:2000

Source:

Rabbit

Isotype:

IgG

Purification:

Affinity purification

Protein Background

Immunogen information

Gene ID:

376497

Uniprot

Q6PCB7

Synonyms:

SLC27A1; ACSVL5; FATP; FATP-1; FATP1

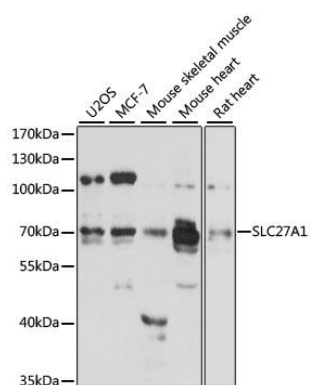
Immunogen:

Recombinant fusion protein containing a sequence corresponding to amino acids 347-646 of human SLC27A1 (NP_940982.1).

Storage:

Store at -20°C. Avoid freeze / thaw cycles. Buffer: PBS with 0.02% sodium azide, 50% glycerol, pH7.3.

Product Images



Western blot analysis of extracts of various cell lines, using SLC27A1 antibody (CAB12847) at 1:3000 dilution. Secondary antibody: HRP Goat Anti-Rabbit IgG (H+L) (CABS014) at 1:10000 dilution. Lysates/proteins: 25ug per lane. Blocking buffer: 3% nonfat dry milk in TBST. Detection: ECL Enhanced Kit (CABM00021). Exposure time: 30s.