

SLC7A9 Rabbit Polyclonal Antibody



CAB12848

Product Information

Size:

20uL, 50uL, 100uL, 200uL

Observed MW:

53kDa

Calculated MW:

53kDa

Applications:

WB IF

Reactivity:

Human, Mouse, Rat

Protein Background

This gene encodes a protein that belongs to a family of light subunits of amino acid transporters. This protein plays a role in the high-affinity and sodium-independent transport of cystine and neutral and dibasic amino acids, and appears to function in the reabsorption of cystine in the kidney tubule. Mutations in this gene cause non-type I cystinuria, a disease that leads to cystine stones in the urinary system due to impaired transport of cystine and dibasic amino acids. Alternate transcript variants, which encode the same protein, have been found for this gene.

Immunogen information

Gene ID:

11136

Uniprot

P82251

Synonyms:

SLC7A9; BAT1; CSNU3

Antibody Information

Recommended dilutions:

WB 1:500 - 1:1000 IF 1:50 - 1:200

Source:

Rabbit

Isotype:

IgG

Purification:

Affinity purification

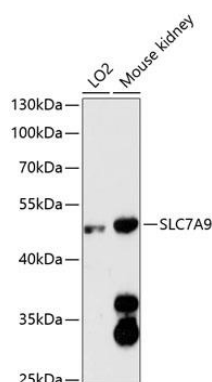
Immunogen:

Recombinant fusion protein containing a sequence corresponding to amino acids 1-100 of human SLC7A9 (NP_055085.1).

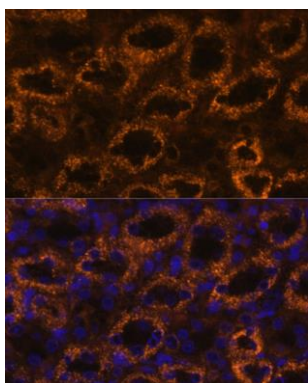
Storage:

Store at -20°C. Avoid freeze / thaw cycles. Buffer: PBS with 0.02% sodium azide, 50% glycerol, pH7.3.

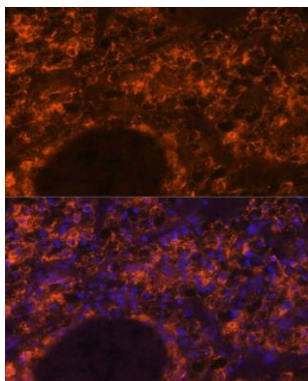
Product Images



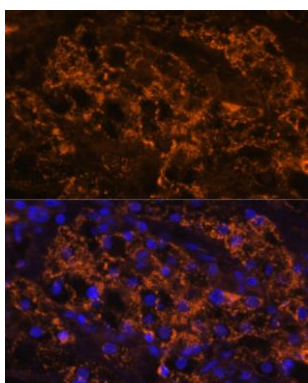
Western blot analysis of extracts of various cell lines, using SLC7A9 antibody (CAB12848) at 1:3000 dilution. Secondary antibody: HRP Goat Anti-Rabbit IgG (H+L) (CABS014) at 1:10000 dilution. Lysates/proteins: 25ug per lane. Blocking buffer: 3% nonfat dry milk in TBST. Detection: ECL Enhanced Kit (CABM00021). Exposure time: 90s.



Immunofluorescence analysis of rat kidney using SLC7A9 antibody (CAB12848) at dilution of 1:100. Blue: DAPI for nuclear staining.



Immunofluorescence analysis of human kidney cancer using SLC7A9 antibody (CAB12848) at dilution of 1:100. Blue: DAPI for nuclear staining.



Immunofluorescence analysis of human kidney cancer using SLC7A9 antibody (CAB12848) at dilution of 1:100. Blue: DAPI for nuclear staining.