

# C1GALT1 Rabbit Polyclonal Antibody



CAB12865

---

## Product Information

### Size:

20uL, 50uL, 100uL, 200uL

### Observed MW:

42kDa

### Calculated MW:

35kDa/42kDa

### Applications:

WB IHC

### Reactivity:

Human, Mouse

## Protein Background

The protein encoded by this gene generates the common core 1 O-glycan structure, Gal-beta-1-3GalNAc-R, by the transfer of Gal from UDP-Gal to GalNAc-alpha-1-R. Core 1 is a precursor for many extended mucin-type O-glycans on cell surface and secreted glycoproteins. Studies in mice suggest that this gene plays a key role in thrombopoiesis and kidney homeostasis.

## Immunogen information

### Gene ID:

56913

### Uniprot

Q9NS00

### Synonyms:

C1GALT1; C1GALT; T-synthase

## Antibody Information

### Recommended dilutions:

WB 1:500 - 1:2000 IHC 1:50  
- 1:100

### Source:

Rabbit

### Isotype:

IgG

### Purification:

Affinity purification

### Immunogen:

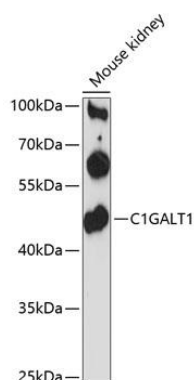
Recombinant fusion protein containing a sequence corresponding to amino acids 194-363 of human C1GALT1 (NP\_064541.1).

### Storage:

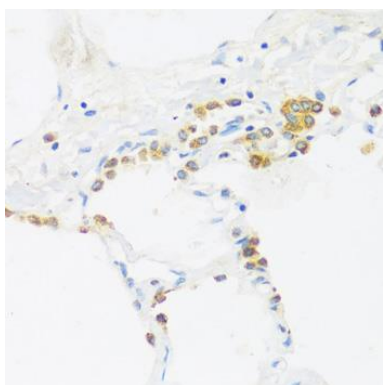
Store at -20°C. Avoid freeze / thaw cycles. Buffer: PBS with 0.02% sodium azide, 50% glycerol, pH7.3.

## Product Images

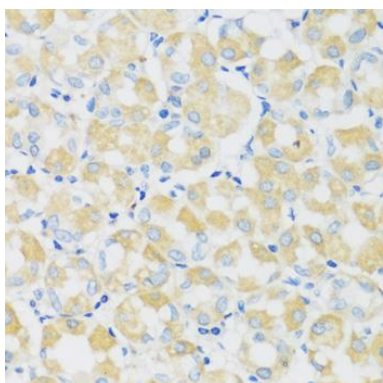
---



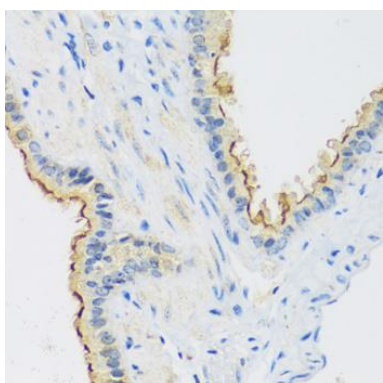
Western blot analysis of extracts of mouse kidney, using C1GALT1 antibody (CAB12865) at 1:3000 dilution. Secondary antibody: HRP Goat Anti-Rabbit IgG (H+L) (CABS014) at 1:10000 dilution. Lysates/proteins: 25ug per lane. Blocking buffer: 3% nonfat dry milk in TBST. Detection: ECL Basic Kit (CABM00020). Exposure time: 90s.



Immunohistochemistry of paraffin-embedded human lung using C1GALT1 antibody (CAB12865) at dilution of 1:100 (40x lens).



Immunohistochemistry of paraffin-embedded human stomach using C1GALT1 antibody (CAB12865) at dilution of 1:100 (40x lens).



Immunohistochemistry of paraffin-embedded mouse lung using C1GALT1 antibody (CAB12865) at dilution of 1:100 (40x lens).