

GSTT1 Rabbit Polyclonal Antibody



CAB1287

Product Information

Size:

20uL, 50uL, 100uL, 200uL

Observed MW:

27kDa

Calculated MW:

13kDa/27kDa

Applications:

WB IHC IF

Reactivity:

Human, Mouse, Rat

Antibody Information

Recommended dilutions:

WB 1:500 - 1:2000 IHC 1:50
- 1:200 IF 1:50 - 1:200

Source:

Rabbit

Isotype:

IgG

Purification:

Affinity purification

Protein Background

The protein encoded by this gene, glutathione S-transferase (GST) theta 1 (GSTT1), is a member of a superfamily of proteins that catalyze the conjugation of reduced glutathione to a variety of electrophilic and hydrophobic compounds. Human GSTs can be divided into five main classes: alpha, mu, pi, theta, and zeta. The theta class includes GSTT1, GSTT2, and GSTT2B. GSTT1 and GSTT2/GSTT2B share 55% amino acid sequence identity and may play a role in human carcinogenesis. The GSTT1 gene is haplotype-specific and is absent from 38% of the population. Alternative splicing of this gene results in multiple transcript variants.

Immunogen information

Gene ID:

2952

Uniprot

P30711

Synonyms:

GSTT1

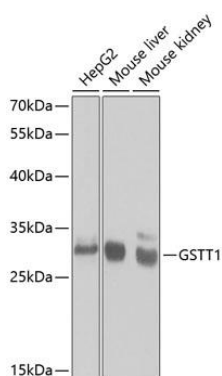
Immunogen:

Recombinant fusion protein containing a sequence corresponding to amino acids 1-240 of human GSTT1 (NP_000844.2).

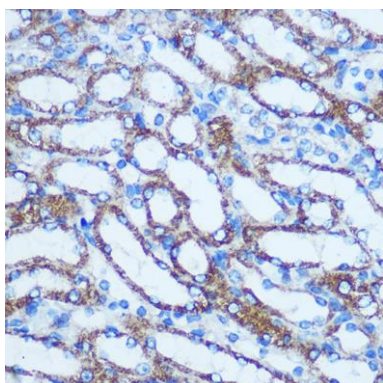
Storage:

Store at -20°C. Avoid freeze / thaw cycles. Buffer: PBS with 0.02% sodium azide, 50% glycerol, pH7.3.

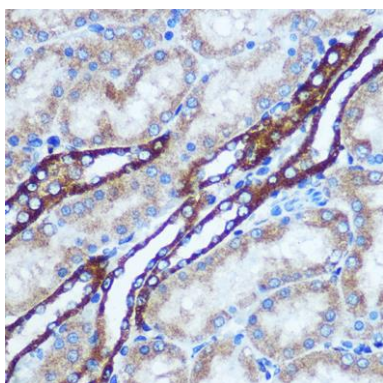
Product Images



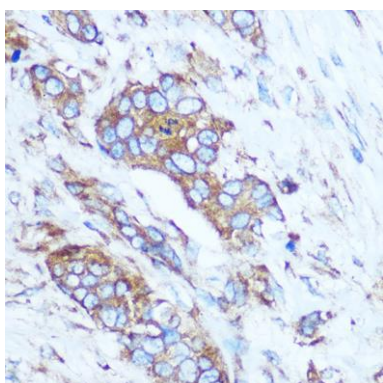
Western blot analysis of extracts of various cell lines, using GSTT1 antibody (CAB1287) at 1:1000 dilution. Secondary antibody: HRP Goat Anti-Rabbit IgG (H+L) (CABS014) at 1:10000 dilution. Lysates/proteins: 25ug per lane. Blocking buffer: 3% nonfat dry milk in TBST.



Immunohistochemistry of paraffin-embedded Mouse kidney using GSTT1 Rabbit pAb (CAB1287) at dilution of 1:100 (40x lens).



Immunohistochemistry of paraffin-embedded Rat kidney using GSTT1 Rabbit pAb (CAB1287) at dilution of 1:100 (40x lens).



Immunohistochemistry of paraffin-embedded Human breast cancer using GSTT1 Rabbit pAb (CAB1287) at dilution of 1:100 (40x lens).