

# ICE2 Rabbit Polyclonal Antibody



CAB12871

## Product Information

### Size:

20uL, 50uL, 100uL, 200uL

### Observed MW:

110kDa

### Calculated MW:

8kDa/110kDa

### Applications:

WB

### Reactivity:

Mouse

## Antibody Information

### Recommended dilutions:

WB 1:500 - 1:1000

### Source:

Rabbit

### Isotype:

IgG

### Purification:

Affinity purification

## Protein Background

This gene encodes a protein component of the little elongation complex (LEC), which plays a role in small nuclear RNA (snRNA) transcription. The LEC regulates snRNA transcription by enhancing both RNA Polymerase II occupancy and transcriptional elongation. The encoded protein and other LEC components have been shown to localize to Cajal bodies, which are sites of ribonucleoprotein (RNP) complex assembly. Pseudogenes of this gene have been identified on chromosomes 3 and 4.

## Immunogen information

### Gene ID:

79664

### Uniprot

Q659A1

### Synonyms:

ICE2; BRCC1; NARG2

### Immunogen:

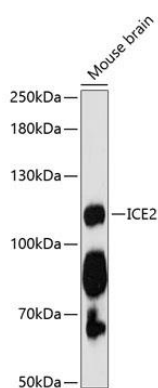
Recombinant fusion protein containing a sequence corresponding to amino acids 660-800 of human ICE2 (NP\_078887.2).

### Storage:

Store at -20°C. Avoid freeze / thaw cycles. Buffer: PBS with 0.02% sodium azide, 50% glycerol, pH7.3.

## Product Images

---



Western blot analysis of extracts of mouse brain, using ICE2 antibody (CAB12871) at 1:3000 dilution. Secondary antibody: HRP Goat Anti-Rabbit IgG (H+L) (CABS014) at 1:10000 dilution. Lysates/proteins: 25ug per lane. Blocking buffer: 3% nonfat dry milk in TBST. Detection: ECL Enhanced Kit (CABM00021). Exposure time: 90s.