

PTGDR Rabbit Polyclonal Antibody



CAB12877

Product Information

Size:

20uL, 50uL, 100uL, 200uL

Observed MW:

43kDa

Calculated MW:

32kDa/40kDa

Applications:

WB

Reactivity:

Human, Mouse

Protein Background

This gene encodes a member of the guanine nucleotide-binding protein (G protein)-coupled receptor (GPCR) superfamily. The receptors are seven-pass transmembrane proteins that respond to extracellular cues and activate intracellular signal transduction pathways. This protein is reported to be a receptor for prostaglandin D2, which is a mediator of allergic inflammation and allergic airway inflammation in asthma. Alternative splicing results in multiple transcript variants.

Immunogen information

Gene ID:

5729

Uniprot

Q13258

Synonyms:

PTGDR; AS1; ASRT1; DP; DP1; PTGDR1

Antibody Information

Recommended dilutions:

WB 1:500 - 1:2000

Source:

Rabbit

Isotype:

IgG

Purification:

Affinity purification

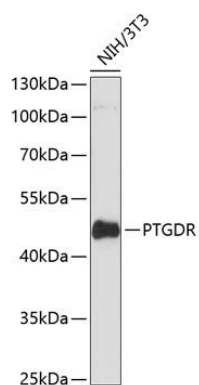
Immunogen:

Recombinant fusion protein containing a sequence corresponding to amino acids 220-359 of human PTGDR (NP_000944.1).

Storage:

Store at -20°C. Avoid freeze / thaw cycles. Buffer: PBS with 0.02% sodium azide, 50% glycerol, pH7.3.

Product Images



Western blot analysis of extracts of NIH/3T3 cells, using PTGDR antibody (CAB12877) at 1:3000 dilution. Secondary antibody: HRP Goat Anti-Rabbit IgG (H+L) (CABS014) at 1:10000 dilution. Lysates/proteins: 25ug per lane. Blocking buffer: 3% nonfat dry milk in TBST. Detection: ECL Basic Kit (CABM00020). Exposure time: 90s.