

CT45A3 Rabbit Polyclonal Antibody



CAB12887

Product Information

Size:

20uL, 50uL, 100uL, 200uL

Observed MW:

21kDa

Calculated MW:

21kDa

Applications:

WB

Reactivity:

Mouse, Rat

Antibody Information

Recommended dilutions:

WB 1:1000 - 1:2000

Source:

Rabbit

Isotype:

IgG

Purification:

Affinity purification

Protein Background

Immunogen information

Gene ID:

441519

Uniprot

Q8NHU0

Synonyms:

CT45A3; CT45-3; CT45-4; CT45.3; CT45.4; CT45A4

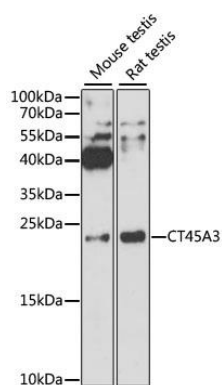
Immunogen:

Recombinant fusion protein containing a sequence corresponding to amino acids 1-189 of human CT45A3 (NP_001017435.1).

Storage:

Store at -20°C. Avoid freeze / thaw cycles. Buffer: PBS with 0.02% sodium azide, 50% glycerol, pH7.3.

Product Images



Western blot analysis of extracts of various cell lines, using CT45A3 antibody (CAB12887) at 1:3000 dilution. Secondary antibody: HRP Goat Anti-Rabbit IgG (H+L) (CABS014) at 1:10000 dilution. Lysates/proteins: 25ug per lane. Blocking buffer: 3% nonfat dry milk in TBST. Detection: ECL Basic Kit (CABM00020). Exposure time: 90s.