

# PALD1 Rabbit Polyclonal Antibody



CAB12893

---

## Product Information

### Size:

20uL, 50uL, 100uL, 200uL

### Observed MW:

97kDa

### Calculated MW:

96kDa

### Applications:

WB IF

### Reactivity:

Human, Mouse, Rat

## Antibody Information

### Recommended dilutions:

WB 1:500 - 1:2000 IF 1:50 - 1:100

### Source:

Rabbit

### Isotype:

IgG

### Purification:

Affinity purification

## Protein Background

### Immunogen information

#### Gene ID:

27143

#### Uniprot

Q9ULE6

#### Synonyms:

PALD1; KIAA1274; PALD; paladin

#### Immunogen:

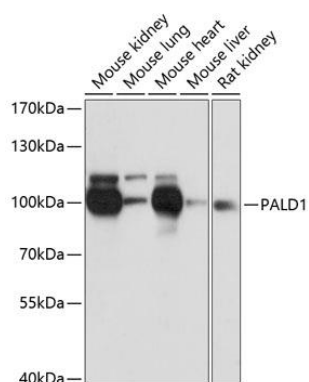
Recombinant fusion protein containing a sequence corresponding to amino acids 1-300 of human PALD1 (NP\_055246.2).

#### Storage:

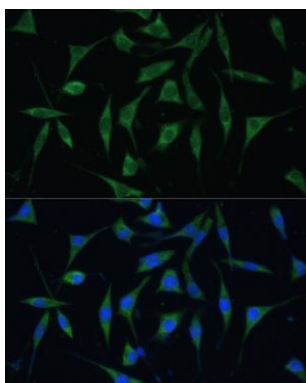
Store at -20°C. Avoid freeze / thaw cycles. Buffer: PBS with 0.02% sodium azide, 50% glycerol, pH7.3.

## Product Images

---



Western blot analysis of extracts of various cell lines, using PALD1 antibody (CAB12893) at 1:3000 dilution. Secondary antibody: HRP Goat Anti-Rabbit IgG (H+L) (CABS014) at 1:10000 dilution. Lysates/proteins: 25ug per lane. Blocking buffer: 3% nonfat dry milk in TBST. Detection: ECL Basic Kit (CABM00020). Exposure time: 1s.



Immunofluorescence analysis of L929 cells using PALD1 Polyclonal Antibody (CAB12893) at dilution of 1:100 (40x lens). Blue: DAPI for nuclear staining.